

PHILIPPINE BIDDING DOCUMENTS

Repair and Rehabilitation of School Buildings (13 Classrooms) at Pangapisan Integrated School

Government of the Republic of the Philippines

**Sixth Edition
July 2020**

Preface

These Philippine Bidding Documents (PBDs) for the procurement of Infrastructure Projects (hereinafter referred to also as the “Works”) through Competitive Bidding have been prepared by the Government of the Philippines for use by all branches, agencies, departments, bureaus, offices, or instrumentalities of the government, including government-owned and/or -controlled corporations, government financial institutions, state universities and colleges, local government units, and autonomous regional government. The procedures and practices presented in this document have been developed through broad experience, and are for mandatory use in projects that are financed in whole or in part by the Government of the Philippines or any foreign government/foreign or international financing institution in accordance with the provisions of the 2016 revised Implementing Rules and Regulations (IRR) of Republic Act (RA) No. 9184.

The PBDs are intended as a model for admeasurements (unit prices or unit rates in a bill of quantities) types of contract, which are the most common in Works contracting.

The Bidding Documents shall clearly and adequately define, among others: (i) the objectives, scope, and expected outputs and/or results of the proposed contract; (ii) the eligibility requirements of Bidders; (iii) the expected contract duration; and (iv) the obligations, duties, and/or functions of the winning Bidder.

Care should be taken to check the relevance of the provisions of the PBDs against the requirements of the specific Works to be procured. If duplication of a subject is inevitable in other sections of the document prepared by the Procuring Entity, care must be exercised to avoid contradictions between clauses dealing with the same matter.

Moreover, each section is prepared with notes intended only as information for the Procuring Entity or the person drafting the Bidding Documents. They shall not be included in the final documents. The following general directions should be observed when using the documents:

- a. All the documents listed in the Table of Contents are normally required for the procurement of Infrastructure Projects. However, they should be adapted as necessary to the circumstances of the particular Project.
- b. Specific details, such as the “*name of the Procuring Entity*” and “*address for bid submission*,” should be furnished in the Instructions to Bidders, Bid Data Sheet, and Special Conditions of Contract. The final documents should contain neither blank spaces nor options.
- c. This Preface and the footnotes or notes in italics included in the Invitation to Bid, BDS, General Conditions of Contract, Special Conditions of Contract, Specifications, Drawings, and Bill of Quantities are not part of the text of the final document, although they contain instructions that the Procuring Entity should strictly follow.
- d. The cover should be modified as required to identify the Bidding Documents as to the names of the Project, Contract, and Procuring Entity, in addition to date of issue.

- e. Modifications for specific Procurement Project details should be provided in the Special Conditions of Contract as amendments to the Conditions of Contract. For easy completion, whenever reference has to be made to specific clauses in the Bid Data Sheet or Special Conditions of Contract, these terms shall be printed in bold typeface on Sections I (Instructions to Bidders) and III (General Conditions of Contract), respectively.
- f. For guidelines on the use of Bidding Forms and the procurement of Foreign-Assisted Projects, these will be covered by a separate issuance of the Government Procurement Policy Board.

TABLE OF CONTENTS

Glossary of Terms, Abbreviations, and Acronyms	5
Section I. Invitation to Bid	8
Section II. Instructions to Bidders	12
1. Scope of Bid	13
2. Funding Information	13
3. Bidding Requirements	13
4. Corrupt, Fraudulent, Collusive, Coercive, and Obstructive Practices	13
5. Eligible Bidders	14
6. Origin of Associated Goods	14
7. Subcontracts	14
8. Pre-Bid Conference	14
9. Clarification and Amendment of Bidding Documents	14
10. Documents Comprising the Bid: Eligibility and Technical Components	15
11. Documents Comprising the Bid: Financial Component	15
12. Alternative Bids	16
13. Bid Prices	16
14. Bid and Payment Currencies	16
15. Bid Security	16
16. Sealing and Marking of Bids	16
17. Deadline for Submission of Bids	17
18. Opening and Preliminary Examination of Bids	17
19. Detailed Evaluation and Comparison of Bids	17
20. Post Qualification	17
21. Signing of the Contract	18
Section III. Bid Data Sheet	19
Section IV. General Conditions of Contract	23
1. Scope of Contract	24
2. Sectional Completion of Works	24
3. Possession of Site	24
4. The Contractor's Obligations	24
5. Performance Security	25
6. Site Investigation Reports	25

7. Warranty	25
8. Liability of the Contractor	25
9. Termination for Other Causes	25
10. Dayworks	26
11. Program of Work	26
12. Instructions, Inspections and Audits	26
13. Advance Payment	26
14. Progress Payments	26
15. Operating and Maintenance Manuals	27
Section V. Special Conditions of Contract	28
Section VI. Specifications	30
Section VII. Drawings	32
Section VIII. Bill of Quantities	38
Section IX. Checklist of Technical and Financial Documents	66

Glossary of Terms, Abbreviations, and Acronyms

ABC – Approved Budget for the Contract.

ARCC – Allowable Range of Contract Cost.

BAC – Bids and Awards Committee.

Bid – A signed offer or proposal to undertake a contract submitted by a bidder in response to and in consonance with the requirements of the bidding documents. Also referred to as *Proposal* and *Tender*. (2016 revised IRR, Section 5[c])

Bidder – Refers to a contractor, manufacturer, supplier, distributor and/or consultant who submits a bid in response to the requirements of the Bidding Documents. (2016 revised IRR, Section 5[d])

Bidding Documents – The documents issued by the Procuring Entity as the bases for bids, furnishing all information necessary for a prospective bidder to prepare a bid for the Goods, Infrastructure Projects, and/or Consulting Services required by the Procuring Entity. (2016 revised IRR, Section 5[e])

BIR – Bureau of Internal Revenue.

BSP – Bangko Sentral ng Pilipinas.

CDA – Cooperative Development Authority.

Consulting Services – Refer to services for Infrastructure Projects and other types of projects or activities of the GOP requiring adequate external technical and professional expertise that are beyond the capability and/or capacity of the GOP to undertake such as, but not limited to: (i) advisory and review services; (ii) pre-investment or feasibility studies; (iii) design; (iv) construction supervision; (v) management and related services; and (vi) other technical services or special studies. (2016 revised IRR, Section 5[i])

Contract – Refers to the agreement entered into between the Procuring Entity and the Supplier or Manufacturer or Distributor or Service Provider for procurement of Goods and Services; Contractor for Procurement of Infrastructure Projects; or Consultant or Consulting Firm for Procurement of Consulting Services; as the case may be, as recorded in the Contract Form signed by the parties, including all attachments and appendices thereto and all documents incorporated by reference therein.

Contractor – is a natural or juridical entity whose proposal was accepted by the Procuring Entity and to whom the Contract to execute the Work was awarded. Contractor as used in these Bidding Documents may likewise refer to a supplier, distributor, manufacturer, or consultant.

CPI – Consumer Price Index.

DOLE – Department of Labor and Employment.

DTI – Department of Trade and Industry.

Foreign-funded Procurement or Foreign-Assisted Project – Refers to procurement whose funding source is from a foreign government, foreign or international financing institution as specified in the Treaty or International or Executive Agreement. (2016 revised IRR, Section 5[b]).

GFI – Government Financial Institution.

GOCC – Government-owned and/or –controlled corporation.

Goods – Refer to all items, supplies, materials and general support services, except Consulting Services and Infrastructure Projects, which may be needed in the transaction of public businesses or in the pursuit of any government undertaking, project or activity, whether in the nature of equipment, furniture, stationery, materials for construction, or personal property of any kind, including non-personal or contractual services such as the repair and maintenance of equipment and furniture, as well as trucking, hauling, janitorial, security, and related or analogous services, as well as procurement of materials and supplies provided by the Procuring Entity for such services. The term “related” or “analogous services” shall include, but is not limited to, lease or purchase of office space, media advertisements, health maintenance services, and other services essential to the operation of the Procuring Entity. (2016 revised IRR, Section 5[r])

GOP – Government of the Philippines.

Infrastructure Projects – Include the construction, improvement, rehabilitation, demolition, repair, restoration or maintenance of roads and bridges, railways, airports, seaports, communication facilities, civil works components of information technology projects, irrigation, flood control and drainage, water supply, sanitation, sewerage and solid waste management systems, shore protection, energy/power and electrification facilities, national buildings, school buildings, hospital buildings, and other related construction projects of the government. Also referred to as *civil works or works*. (2016 revised IRR, Section 5[u])

LGUs – Local Government Units.

NFCC – Net Financial Contracting Capacity.

NGA – National Government Agency.

PCAB – Philippine Contractors Accreditation Board.

PhilGEPS - Philippine Government Electronic Procurement System.

Procurement Project – refers to a specific or identified procurement covering goods, infrastructure project or consulting services. A Procurement Project shall be described, detailed, and scheduled in the Project Procurement Management Plan prepared by the agency which shall be consolidated in the procuring entity's Annual Procurement Plan. (GPPB Circular No. 06-2019 dated 17 July 2019)

PSA – Philippine Statistics Authority.

SEC – Securities and Exchange Commission.

SLCC – Single Largest Completed Contract.

UN – United Nations.

Section I. Invitation to Bid

Notes on the Invitation to Bid

The Invitation to Bid (IB) provides information that enables potential Bidders to decide whether to participate in the procurement at hand. The IB shall be posted in accordance with Section 21.2 of the 2016 revised IRR of RA No. 9184.

Apart from the essential items listed in the Bidding Documents, the IB should also indicate the following:

- a. The date of availability of the Bidding Documents, which shall be from the time the IB is first advertised/posted until the deadline for the submission and receipt of bids;
- b. The place where the Bidding Documents may be acquired or the website where it may be downloaded;
- c. The deadline for the submission and receipt of bids; and
- d. Any important bid evaluation criteria.

The IB should be incorporated into the Bidding Documents. The information contained in the IB must conform to the Bidding Documents and in particular to the relevant information in the Bid Data Sheet.



Republic of the Philippines
Department of Education
Region I

SCHOOLS DIVISION OFFICE OF ALAMINOS CITY

Bids and Awards Committee

**INVITATION TO BID for
Repair and Rehabilitation of School Buildings
(13 Classrooms) at Pangapisan Integrated School**

1. The **Department of Education (DepED) Schools Division Office of Alaminos City, Pangasinan**, through the FY 2024 Government Appropriations Act (GAA), intends to apply the sum of **Six Million Two Hundred Fifty-Two Thousand Eight Hundred Ten Pesos and 46/100 (PhP 6,252,810.46)**, being the Approved Budget for the Contract (ABC), to eligible payments under the contract for the **Repair and Rehabilitation of School Buildings (13 Classrooms) at Pangapisan Integrated School** with Bid Reference No. 2024-08-002. Bids received in excess of the ABC shall be automatically rejected at bid opening.
2. The **DepED Schools Division Office of Alaminos City, Pangasinan** through its Bids and Awards Committee (BAC), now invites bids for the above Procurement Project. Completion of the works is required within 150 calendar days upon receipt of the Notice to Proceed. Prospective contractors/bidders with Philippine Contractors Accreditation Board (PCAB) license classification for General Engineering and/or General Building shall be allowed and must have an experience of having completed at least one (1) contract that is similar to the contract to be bid, and whose value, adjusted to current prices using the NSO consumer price indices, must be at least fifty percent (50%) of the ABC to be bid. The description of an eligible bidder is contained in the Bidding Documents, particularly, in Section II, Instructions to Bidders.
3. Bidding will be conducted through open competitive bidding procedures using non-discretionary “pass/fail” criterion as specified in the 2016 revised Implementing Rules and Regulations (IRR) of Republic Act (RA) No. 9184.
4. Interested bidders may obtain further information from the BAC Secretariat **DepED Schools Division Office of Alaminos City, Pangasinan** and inspect the Bidding Documents at the same address from **Monday to Friday, 8:00 AM to 5:00 PM**.

5. A complete set of Bidding Documents may be may be acquired by interested bidders on **August 28, 2024** from given address and website below and *upon payment of the applicable fee for the Bidding Documents, pursuant to the latest Guidelines issued by the GPPB, in the amount of **Ten Thousand Pesos (Php10,000.00)***. The Procuring Entity shall allow the bidder to present its proof of payment for the fees **in person or through the Land Bank Account at DEPED ALAMINOS CITY DIVISION with Account Number 1272-1040-49**. Deposit slip should be scanned and emailed to the BAC Secretariat at **bac.alaminocity@deped.gov.ph**. Only bidders who purchased the Bidding Documents will be allowed to submit bids (ITB 6.8).
6. The **DepED Schools Division Office of Alaminos City, Pangasinan** will hold a **Pre-Bid Conference on September 05, 2024, 9:00 AM** at the **SDO Library Hub, Schools Division Office of Alaminos City, San Jose Drive, Poblacion, Alaminos City, Pangasinan** and/or through videoconferencing/webcasting via zoom or google meet which shall be open to prospective bidders. Link shall be provided upon request by the prospective bidder.
7. Bids must be duly received by the **SDO Records Office** and submitted to the BAC Secretariat through manual submission at the office address as indicated below on or before **9:00 o'clock in the morning of September 17, 2024**. Late bids shall not be accepted.
8. All bids must be accompanied by a bid security in any of the acceptable forms and in the amount stated in ITB Clause 16.
9. Bid opening shall follow after the deadline of submission at the given address below and and/or through videoconferencing/webcasting via zoom or google meet. Bids will be opened in the presence of the bidders' representatives who choose to attend the activity.

Activity	Date & Time	Venue
Invitation to Bid (Advertisement/ Posting)	August 28, 2024	
Issuance of Bidding Documents	August 28 to September 17 , 2024 9:00 AM	Schools Division Office of Alaminos City BAC Office, San Jose Drive, Poblacion, Alaminos City, Pangasinan
Pre-Bid Conference	September 5, 2024 9:00 A.M.	Schools Division Office of Alaminos City Library
Deadline of Submission and Opening of Bids	September 17, 2024 9:00 A.M.	Hub, San Jose Drive, Poblacion, Alaminos City, Pangasinan

Evaluation of Bids	September 18, 2024 9:00 A.M.	
Post Qualification	September 19-20, 2024	
Issuance of Resolution to Award (RTA)	September 21, 2024	Schools Division Office of Alaminos City Library Hub, San Jose Drive, Poblacion, Alaminos City, Pangasinan
Issuance of Notice to Award	To be declared upon receipt of Sub-ARO	
Contract Preparation and Signing		
Issuance of Notice to Proceed		

10. The [DepED Schools Division Office of Alaminos City, Pangasinan](#) reserves the right to reject any and all bids, declare a failure of bidding, not award the contract(s), or annul the bidding process at any time prior to contract award in accordance with Sections 35.6 and 41 of the 2016 Revised Implementing Rules and Regulations (IRR) of RA No. 9184, without thereby incurring any liability to the affected bidder or bidders.

11. For further information, please refer to:

Robe Rose S. Gubatan
Head, BAC Secretariat
DepED Schools Division Office of Alaminos City, Pangasinan
robe.gubatan@deped.gov.ph/
bac.alaminocity@deped.gov.ph

12. You may visit the following websites:

For downloading of Bidding Documents: www.depedalaminocity.com

August 28, 2024

WILFREDO E. SINDAYEN, CESO VI (SGD)
BAC Chairperson

Section II. Instructions to Bidders

Notes on the Instructions to Bidders

This Section on the Instruction to Bidders (ITB) provides the information necessary for bidders to prepare responsive bids, in accordance with the requirements of the Procuring Entity. It also provides information on bid submission, eligibility check, opening and evaluation of bids, post-qualification, and on the award of contract.

1. Scope of Bid

The Procuring Entity, DepED Schools Division Office of Alaminos City, Pangasinan invites Bids for the Repair and Rehabilitation of School Buildings (13 Classrooms) at Pangapisan Integrated School, with Project Identification Number PB-Infra-2024-08-02.

The Procurement Project (referred to herein as “Project”) is for the construction of Works, as described in Section VI (Specifications).

2. Funding Information

2.1. The GOP through the source of funding as indicated below for **CY 2024 BEFF** in the amount of **Six Million Two Hundred Fifty-Two Thousand Eight Hundred Ten Pesos and 46/100 (PhP 6,252,810.46)**.

2.2. The source of funding is: NGA, the General Appropriations Act or Special Appropriations.

3. Bidding Requirements

The Bidding for the Project shall be governed by all the provisions of RA No. 9184 and its 2016 revised IRR, including its Generic Procurement Manual and associated policies, rules and regulations as the primary source thereof, while the herein clauses shall serve as the secondary source thereof.

Any amendments made to the IRR and other GPPB issuances shall be applicable only to the ongoing posting, advertisement, or invitation to bid by the BAC through the issuance of a supplemental or bid bulletin.

The Bidder, by the act of submitting its Bid, shall be deemed to have inspected the site, determined the general characteristics of the contracted Works and the conditions for this Project, such as the location and the nature of the work; (b) climatic conditions; (c) transportation facilities; (c) nature and condition of the terrain, geological conditions at the site communication facilities, requirements, location and availability of construction aggregates and other materials, labor, water, electric power and access roads; and (d) other factors that may affect the cost, duration and execution or implementation of the contract, project, or work and examine all instructions, forms, terms, and project requirements in the Bidding Documents.

4. Corrupt, Fraudulent, Collusive, Coercive, and Obstructive Practices

The Procuring Entity, as well as the Bidders and Contractors, shall observe the highest standard of ethics during the procurement and execution of the contract. They or through an agent shall not engage in corrupt, fraudulent, collusive, coercive, and obstructive practices defined under Annex “I” of the 2016 revised IRR of RA No. 9184 or other integrity violations in competing for the Project.

5. Eligible Bidders

- 5.1. Only Bids of Bidders found to be legally, technically, and financially capable will be evaluated.
- 5.2. The Bidder must have an experience of having completed a Single Largest Completed Contract (SLCC) that is similar to this Project, equivalent to at least fifty percent (50%) of the ABC adjusted, if necessary, by the Bidder to current prices using the PSA's CPI, except under conditions provided for in Section 23.4.2.4 of the 2016 revised IRR of RA No. 9184.

A contract is considered to be "similar" to the contract to be bid if it has the major categories of work stated in the **BDS**.
- 5.3. For Foreign-funded Procurement, the Procuring Entity and the foreign government/foreign or international financing institution may agree on another track record requirement, as specified in the Bidding Document prepared for this purpose.
- 5.4. The Bidders shall comply with the eligibility criteria under Section 23.4.2 of the 2016 IRR of RA No. 9184.

6. Origin of Associated Goods

There is no restriction on the origin of Goods other than those prohibited by a decision of the UN Security Council taken under Chapter VII of the Charter of the UN.

7. Subcontracts

Subcontracting is not allowed.

8. Pre-Bid Conference

The Procuring Entity will hold a pre-bid conference for this Project on the specified date and time and either at its physical address and/or through videoconferencing/webcasting} as indicated in paragraph 6 of the **IB**.

9. Clarification and Amendment of Bidding Documents

Prospective bidders may request for clarification on and/or interpretation of any part of the Bidding Documents. Such requests must be in writing and received by the Procuring Entity, either at its given address or through electronic mail indicated in the **IB**, at least ten (10) calendar days before the deadline set for the submission and receipt of Bids.

10. Documents Comprising the Bid: Eligibility and Technical Components

- 10.1. The first envelope shall contain the eligibility and technical documents of the Bid as specified in **Section IX. Checklist of Technical and Financial Documents**.
- 10.2. If the eligibility requirements or statements, the bids, and all other documents for submission to the BAC are in foreign language other than English, it must be accompanied by a translation in English, which shall be authenticated by the appropriate Philippine foreign service establishment, post, or the equivalent office having jurisdiction over the foreign bidder's affairs in the Philippines. For Contracting Parties to the Apostille Convention, only the translated documents shall be authenticated through an apostille pursuant to GPPB Resolution No. 13-2019 dated 23 May 2019. The English translation shall govern, for purposes of interpretation of the bid.
- 10.3. A valid special PCAB License in case of Joint Ventures, and registration for the type and cost of the contract for this Project. Any additional type of Contractor license or permit shall be indicated in the **BDS**.
- 10.4. A List of Contractor's key personnel (e.g., Project Manager, Project Engineers, Materials Engineers, and Foremen) assigned to the contract to be bid, with their complete qualification and experience data shall be provided. These key personnel must meet the required minimum years of experience set in the **BDS**.
- 10.5. A List of Contractor's major equipment units, which are owned, leased, and/or under purchase agreements, supported by proof of ownership, certification of availability of equipment from the equipment lessor/vendor for the duration of the project, as the case may be, must meet the minimum requirements for the contract set in the **BDS**.

11. Documents Comprising the Bid: Financial Component

- 11.1. The second bid envelope shall contain the financial documents for the Bid as specified in **Section IX. Checklist of Technical and Financial Documents**.
- 11.2. Any bid exceeding the ABC indicated in paragraph 1 of the **IB** shall not be accepted.
- 11.3. For Foreign-funded procurement, a ceiling may be applied to bid prices provided the conditions are met under Section 31.2 of the 2016 revised IRR of RA No. 9184.

12. Alternative Bids

Bidders shall submit offers that comply with the requirements of the Bidding Documents, including the basic technical design as indicated in the drawings and specifications. Unless there is a value engineering clause in the **BDS**, alternative Bids shall not be accepted.

13. Bid Prices

All bid prices for the given scope of work in the Project as awarded shall be considered as fixed prices, and therefore not subject to price escalation during contract implementation, except under extraordinary circumstances as determined by the NEDA and approved by the GPPB pursuant to the revised Guidelines for Contract Price Escalation guidelines.

14. Bid and Payment Currencies

14.1. Bid prices may be quoted in the local currency or tradeable currency accepted by the BSP at the discretion of the Bidder. However, for purposes of bid evaluation, Bids denominated in foreign currencies shall be converted to Philippine currency based on the exchange rate as published in the BSP reference rate bulletin on the day of the bid opening.

14.2. Payment of the contract price shall be made in Philippine Pesos.

15. Bid Security

15.1. The Bidder shall submit a Bid Securing Declaration or any form of Bid Security in the amount indicated in the **BDS**, which shall be not less than the percentage of the ABC in accordance with the schedule in the **BDS**.

15.2. The Bid and bid security shall be valid until *January 15, 2024*. Any bid not accompanied by an acceptable bid security shall be rejected by the Procuring Entity as non-responsive.

16. Sealing and Marking of Bids

Each Bidder shall submit one copy of the first and second components of its Bid.

The Procuring Entity may request additional hard copies and/or electronic copies of the Bid. However, failure of the Bidders to comply with the said request shall not be a ground for disqualification.

If the Procuring Entity allows the submission of bids through online submission to the given website or any other electronic means, the Bidder shall submit an electronic copy of its Bid, which must be digitally signed. An electronic copy that cannot be opened or is corrupted shall be considered non-responsive and, thus, automatically disqualified.

17. **Deadline for Submission of Bids**

The Bidders shall submit on the specified date and time and either at its physical address or through online submission as indicated in paragraph 7 of the **IB**.

18. **Opening and Preliminary Examination of Bids**

18.1. The BAC shall open the Bids in public at the time, on the date, and at the place specified in paragraph 9 of the **IB**. The Bidders' representatives who are present shall sign a register evidencing their attendance. In case videoconferencing, webcasting or other similar technologies will be used, attendance of participants shall likewise be recorded by the BAC Secretariat.

In case the Bids cannot be opened as scheduled due to justifiable reasons, the rescheduling requirements under Section 29 of the 2016 revised IRR of RA No. 9184 shall prevail.

18.2. The preliminary examination of Bids shall be governed by Section 30 of the 2016 revised IRR of RA No. 9184.

19. **Detailed Evaluation and Comparison of Bids**

19.1. The Procuring Entity's BAC shall immediately conduct a detailed evaluation of all Bids rated "*passed*" using non-discretionary pass/fail criteria. The BAC shall consider the conditions in the evaluation of Bids under Section 32.2 of 2016 revised IRR of RA No. 9184.

19.2. If the Project allows partial bids, all Bids and combinations of Bids as indicated in the **BDS** shall be received by the same deadline and opened and evaluated simultaneously so as to determine the Bid or combination of Bids offering the lowest calculated cost to the Procuring Entity. Bid Security as required by **ITB** Clause 15 shall be submitted for each contract (lot) separately.

19.3. In all cases, the NFCC computation pursuant to Section 23.4.2.6 of the 2016 revised IRR of RA No. 9184 must be sufficient for the total of the ABCs for all the lots participated in by the prospective Bidder.

20. **Post Qualification**

Within a non-extendible period of five (5) calendar days from receipt by the Bidder of the notice from the BAC that it submitted the Lowest Calculated Bid, the Bidder shall submit its latest income and business tax returns filed and paid through the BIR Electronic Filing and Payment System (eFPS), and other appropriate licenses and permits required by law and stated in the **BDS**.

21. Signing of the Contract

The documents required in Section 37.2 of the 2016 revised IRR of RA No. 9184 shall form part of the Contract. Additional Contract documents are indicated in the **BDS**.

Section III. Bid Data Sheet

Notes on the Bid Data Sheet (BDS)

The Bid Data Sheet (BDS) consists of provisions that supplement, amend, or specify in detail, information, or requirements included in the ITB found in Section II, which are specific to each procurement.

This Section is intended to assist the Procuring Entity in providing the specific information in relation to corresponding clauses in the ITB and has to be prepared for each specific procurement.

The Procuring Entity should specify in the BDS information and requirements specific to the circumstances of the Procuring Entity, the processing of the procurement, and the bid evaluation criteria that will apply to the Bids. In preparing the BDS, the following aspects should be checked:

- a. Information that specifies and complements provisions of the ITB must be incorporated.
- b. Amendments and/or supplements, if any, to provisions of the ITB as necessitated by the circumstances of the specific procurement, must also be incorporated.

Bid Data Sheet

ITB Clause																									
5.2	For this purpose, contracts similar to the Project refer to contracts which have the same major categories of work, which shall be: <i>Repair and Rehabilitation of School Buildings</i>																								
10.1	<p>Documents Comprising the Bid: Eligibility and Technical Components</p> <p>Statement of the prospective bidder of all its ongoing government and private contracts, including contracts awarded but not yet started, if any, whether similar or not similar in nature and complexity to the contract to be bid.</p> <p>Names of outstanding contracts with other contracting party, i.e., PE or private company allowed by the rules, contract date, period and amount or value; and categories of work and dates of delivery</p>																								
10.3	<i>PCAB License</i> <i>Registration Particulars (Civil Work) minimum Category D</i>																								
10.4	<p>The key personnel must meet the required minimum years of experience set below:</p> <table style="width: 100%; border-collapse: collapse;"> <thead> <tr> <th style="text-align: left;"><u>Key Personnel</u></th> <th style="text-align: center;"><u>General Experience</u></th> <th style="text-align: center;"><u>Relevant Experience</u></th> </tr> </thead> <tbody> <tr> <td>Project Engineer</td> <td style="text-align: center;">5 years</td> <td style="text-align: center;">2 years</td> </tr> <tr> <td>Electrical Engineer/Electrician</td> <td></td> <td></td> </tr> <tr> <td>General Foreman</td> <td></td> <td></td> </tr> <tr> <td>Welder</td> <td></td> <td></td> </tr> <tr> <td>Carpenter</td> <td></td> <td></td> </tr> <tr> <td>Mason</td> <td></td> <td></td> </tr> <tr> <td>Painter</td> <td></td> <td></td> </tr> </tbody> </table> <p>The General Experience means total years of civil works experience (of any nature of construction [and engineering consultancy services]). If a proposed key personnel is an employee of the bidder and working on another project during the bidding and implementation/construction of this project, the bidder shall submit a certification that: (1) the key personnel concerned shall be pulled-out from said on-going/another project once the bidder is awarded this project; or (2) the key personnel concerned shall be replaced with a personnel of equal or better qualifications, subject to the approval of the authorized Engineers of the Procuring Entity.</p>	<u>Key Personnel</u>	<u>General Experience</u>	<u>Relevant Experience</u>	Project Engineer	5 years	2 years	Electrical Engineer/Electrician			General Foreman			Welder			Carpenter			Mason			Painter		
<u>Key Personnel</u>	<u>General Experience</u>	<u>Relevant Experience</u>																							
Project Engineer	5 years	2 years																							
Electrical Engineer/Electrician																									
General Foreman																									
Welder																									
Carpenter																									
Mason																									
Painter																									
10.5	<p>The minimum major equipment requirements are the following:</p> <table style="width: 100%; border-collapse: collapse;"> <thead> <tr> <th style="text-align: left;"><u>Equipment</u></th> <th style="text-align: center;"><u>Capacity</u></th> <th style="text-align: center;"><u>Number of Units</u></th> </tr> </thead> <tbody> <tr> <td>Hand tools</td> <td></td> <td></td> </tr> <tr> <td>Welding machine</td> <td></td> <td></td> </tr> <tr> <td>One-bagger mixer</td> <td></td> <td></td> </tr> <tr> <td>Bar cutter</td> <td></td> <td></td> </tr> </tbody> </table>	<u>Equipment</u>	<u>Capacity</u>	<u>Number of Units</u>	Hand tools			Welding machine			One-bagger mixer			Bar cutter											
<u>Equipment</u>	<u>Capacity</u>	<u>Number of Units</u>																							
Hand tools																									
Welding machine																									
One-bagger mixer																									
Bar cutter																									

11.1	<p>Documents Comprising the Bid: Financial Component</p> <p>Bid prices in figures and in words; and The Bid price shall include the cost of all taxes, such as, but not limited to, value added tax, income tax, local taxes, and other fiscal levies and duties which shall be itemized in the bid form and reflected in the price schedule or detailed estimates.</p> <p>Original of duly signed and accomplished Price Schedule(s). (Soft copy in excel and PDF should be submitted in a flash drive)</p> <p>Prices indicated in the Price Schedule shall be entered separately in the manner, stipulated for Goods offered from within the PE's country, and for goods offered from abroad.</p>
15.1	<p>The bid security shall be in the form of a Bid Securing Declaration or any of the following forms and amounts:</p> <ol style="list-style-type: none"> a. The amount of not less than One Hundred Twenty-Five Thousand Fifty-Six Pesos and 21/100 (Php125,056.21) [(2%) of ABC], if bid security is in cash, cashier's/manager's check, bank draft/guarantee or irrevocable letter of credit; b. The amount of not less than Three Hundred Twelve Thousand Six Hundred Forty Pesos and 52/100. (Php312,640.52) [(5%) of ABC] if bid security is in Surety Bond.
16	<p>Sealing and marking of Bids</p> <p>Prospective bidders shall enclose their original eligibility and technical documents in a sealed envelope marked as ORIGINAL– TECHNICAL PROPOSAL. Copies thereof shall be similarly sealed in envelopes marked as COPY 1 – TECHNICAL PROPOSAL and COPY 2 – TECHNICAL PROPOSAL. The said envelopes containing original and the copies shall then be enclosed in one single envelope marked as TECHNICAL PROPOSAL.</p> <p>On the other hand the original of their financial documents shall be enclosed in another sealed envelope marked as ORIGINAL – FINANCIAL PROPOSAL. Copies thereof shall be similarly sealed in envelopes marked as COPY 1 – FINANCIAL PROPOSAL and COPY 2 – FINANCIAL PROPOSAL. The said envelopes containing the original and the copies shall then be enclosed in one single envelope marked as FINANCIAL PROPOSAL. Further, the envelopes marked as TECHNICAL PROPOSAL and FINANCIAL PROPOSAL shall be enclosed and/or sealed in an outer envelope marked as MOTHER ENVELOPE. In lieu of the Class 'A' Eligibility Documents, including the SEC, DTI, or CDA registration certificate, and the Mayor's Permit, the bidder shall solely submit a valid and updated PhilGEPS Certificate of Platinum Registration & Membership for eligibility assessment. However, original copies of these documents must be provided during postqualification upon request by the BAC or its authorized representatives for validation. Unsealed or unmarked bid envelopes shall be rejected. However, bid envelopes that are not properly sealed and marked, as required in the Bid Docs, shall be accepted, provided that the bidder or its duly authorized representative. shall acknowledge such condition of the bid as submitted. The BAC shall assume no responsibility for the misplacement of the contents of the improperly sealed or marked bid,</p>

	or for its premature opening. ONLINE SUBMISSION OF BIDS IS NOT ALLOWED.
21	Additional contract documents relevant to the Project that may be required by existing laws and/or the Procuring Entity, such as construction schedule and S-curve, manpower schedule, construction methods, equipment utilization schedule, construction safety and health program approved by the DOLE, and other acceptable tools of project scheduling.

Section IV. General Conditions of Contract

Notes on the General Conditions of Contract

The General Conditions of Contract (GCC) in this Section, read in conjunction with the Special Conditions of Contract in Section V and other documents listed therein, should be a complete document expressing all the rights and obligations of the parties.

Matters governing performance of the Contractor, payments under the contract, or matters affecting the risks, rights, and obligations of the parties under the contract are included in the GCC and Special Conditions of Contract.

Any complementary information, which may be needed, shall be introduced only through the Special Conditions of Contract.

1. Scope of Contract

This Contract shall include all such items, although not specifically mentioned, that can be reasonably inferred as being required for its completion as if such items were expressly mentioned herein. All the provisions of RA No. 9184 and its 2016 revised IRR, including the Generic Procurement Manual, and associated issuances, constitute the primary source for the terms and conditions of the Contract, and thus, applicable in contract implementation. Herein clauses shall serve as the secondary source for the terms and conditions of the Contract.

This is without prejudice to Sections 74.1 and 74.2 of the 2016 revised IRR of RA No. 9184 allowing the GPPB to amend the IRR, which shall be applied to all procurement activities, the advertisement, posting, or invitation of which were issued after the effectivity of the said amendment.

2. Sectional Completion of Works

If sectional completion is specified in the **Special Conditions of Contract (SCC)**, references in the Conditions of Contract to the Works, the Completion Date, and the Intended Completion Date shall apply to any Section of the Works (other than references to the Completion Date and Intended Completion Date for the whole of the Works).

3. Possession of Site

3.1 The Procuring Entity shall give possession of all or parts of the Site to the Contractor based on the schedule of delivery indicated in the **SCC**, which corresponds to the execution of the Works. If the Contractor suffers delay or incurs cost from failure on the part of the Procuring Entity to give possession in accordance with the terms of this clause, the Procuring Entity's Representative shall give the Contractor a Contract Time Extension and certify such sum as fair to cover the cost incurred, which sum shall be paid by Procuring Entity.

3.2 If possession of a portion is not given by the above date, the Procuring Entity will be deemed to have delayed the start of the relevant activities. The resulting adjustments in contract time to address such delay may be addressed through contract extension provided under Annex "E" of the 2016 revised IRR of RA No. 9184.

4. The Contractor's Obligations

The Contractor shall employ the key personnel named in the Schedule of Key Personnel indicating their designation, in accordance with **ITB** Clause 10.3 and specified in the **BDS**, to carry out the supervision of the Works.

The Procuring Entity will approve any proposed replacement of key personnel only if their relevant qualifications and abilities are equal to or better than those of the personnel listed in the Schedule.

5. Performance Security

- 5.1. Within ten (10) calendar days from receipt of the Notice of Award from the Procuring Entity but in no case later than the signing of the contract by both parties, the successful Bidder shall furnish the performance security in any of the forms prescribed in Section 39 of the 2016 revised IRR.
- 5.2. The Contractor, by entering into the Contract with the Procuring Entity, acknowledges the right of the Procuring Entity to institute action pursuant to RA No. 3688 against any subcontractor be they an individual, firm, partnership, corporation, or association supplying the Contractor with labor, materials and/or equipment for the performance of this Contract.

6. Site Investigation Reports

The Contractor, in preparing the Bid, shall rely on any Site Investigation Reports referred to in the SCC supplemented by any information obtained by the Contractor.

7. Warranty

- 7.1. In case the Contractor fails to undertake the repair works under Section 62.2.2 of the 2016 revised IRR, the Procuring Entity shall forfeit its performance security, subject its property(ies) to attachment or garnishment proceedings, and perpetually disqualify it from participating in any public bidding. All payables of the GOP in his favor shall be offset to recover the costs.
- 7.2. The warranty against Structural Defects/Failures, except that occasioned-on force majeure, shall cover the period from the date of issuance of the Certificate of Final Acceptance by the Procuring Entity. Specific duration of the warranty is found in the SCC.

8. Liability of the Contractor

Subject to additional provisions, if any, set forth in the SCC, the Contractor's liability under this Contract shall be as provided by the laws of the Republic of the Philippines.

If the Contractor is a joint venture, all partners to the joint venture shall be jointly and severally liable to the Procuring Entity.

9. Termination for Other Causes

Contract termination shall be initiated in case it is determined *prima facie* by the Procuring Entity that the Contractor has engaged, before, or during the implementation of the contract, in unlawful deeds and behaviors relative to contract acquisition and implementation, such as, but not limited to corrupt, fraudulent, collusive, coercive, and obstructive practices as stated in ITB Clause 4.

10. Dayworks

Subject to the guidelines on Variation Order in Annex “E” of the 2016 revised IRR of RA No. 9184, and if applicable as indicated in the SCC, the Dayworks rates in the Contractor’s Bid shall be used for small additional amounts of work only when the Procuring Entity’s Representative has given written instructions in advance for additional work to be paid for in that way.

11. Program of Work

11.1. The Contractor shall submit to the Procuring Entity’s Representative for approval the said Program of Work showing the general methods, arrangements, order, and timing for all the activities in the Works. The submissions of the Program of Work are indicated in the SCC.

11.2. The Contractor shall submit to the Procuring Entity’s Representative for approval an updated Program of Work at intervals no longer than the period stated in the SCC. If the Contractor does not submit an updated Program of Work within this period, the Procuring Entity’s Representative may withhold the amount stated in the SCC from the next payment certificate and continue to withhold this amount until the next payment after the date on which the overdue Program of Work has been submitted.

12. Instructions, Inspections and Audits

The Contractor shall permit the GOP or the Procuring Entity to inspect the Contractor’s accounts and records relating to the performance of the Contractor and to have them audited by auditors of the GOP or the Procuring Entity, as may be required.

13. Advance Payment

The Procuring Entity shall, upon a written request of the Contractor which shall be submitted as a Contract document, make an advance payment to the Contractor in an amount not exceeding fifteen percent (15%) of the total contract price, to be made in lump sum, or at the most two installments according to a schedule specified in the SCC, subject to the requirements in Annex “E” of the 2016 revised IRR of RA No. 9184.

14. Progress Payments

The Contractor may submit a request for payment for Work accomplished. Such requests for payment shall be verified and certified by the Procuring Entity’s Representative/Project Engineer. Except as otherwise stipulated in the SCC, materials and equipment delivered on the site but not completely put in place shall not be included for payment.

15. Operating and Maintenance Manuals

- 15.1. If required, the Contractor will provide “as built” Drawings and/or operating and maintenance manuals as specified in the SCC.
- 15.2. If the Contractor does not provide the Drawings and/or manuals by the dates stated above, or they do not receive the Procuring Entity’s Representative’s approval, the Procuring Entity’s Representative may withhold the amount stated in the SCC from payments due to the Contractor.

Section V. Special Conditions of Contract

Notes on the Special Conditions of Contract

Similar to the BDS, the clauses in this Section are intended to assist the Procuring Entity in providing contract-specific information in relation to corresponding clauses in the GCC found in Section IV.

The Special Conditions of Contract (SCC) complement the GCC, specifying contractual requirements linked to the special circumstances of the Procuring Entity, the Procuring Entity's country, the sector, and the Works procured. In preparing this Section, the following aspects should be checked:

- a. Information that complements provisions of the GCC must be incorporated.
- b. Amendments and/or supplements to provisions of the GCC as necessitated by the circumstances of the specific purchase, must also be incorporated.

However, no special condition which defeats or negates the general intent and purpose of the provisions of the GCC should be incorporated herein.

Special Conditions of Contract

GCC Clause	
6	<i>The site investigation reports are: None.</i>
7.2	<i>The warranty against Defects/Failures is: One (1) year.</i>
11.2	Updated Program of Works should be submitted within three (3) calendar days from the receipt of notice of submission. The amount to be withheld for late submission is Ten Thousand Pesos (Php10,000.00).
13	<i>The amount of the advance payment is: not to exceed 15% of the total contract price and schedule of payment.</i>
14	Materials and equipment delivered on the site but not completely put in place shall not be included for payment.
15.1	The date by which operating and maintenance manuals are required is after the receipt of Notice of Award. The date by which “as built” drawings are required is during Turn-over.
15.2	The amount to be withheld for failing to produce “as built” drawings and/or operating and maintenance manuals by the date required is Ten Thousand Pesos (Php10,000.00)

Section VI. Specifications

Notes on Specifications

A set of precise and clear specifications is a prerequisite for Bidders to respond realistically and competitively to the requirements of the Procuring Entity without qualifying or conditioning their Bids. In the context of international competitive bidding, the specifications must be drafted to permit the widest possible competition and, at the same time, present a clear statement of the required standards of workmanship, materials, and performance of the goods and services to be procured. Only if this is done will the objectives of economy, efficiency, and fairness in procurement be realized, responsiveness of Bids be ensured, and the subsequent task of bid evaluation facilitated. The specifications should require that all goods and materials to be incorporated in the Works be new, unused, of the most recent or current models, and incorporate all recent improvements in design and materials unless provided otherwise in the Contract.

Samples of specifications from previous similar projects are useful in this respect. The use of metric units is mandatory. Most specifications are normally written specially by the Procuring Entity or its representative to suit the Works at hand. There is no standard set of Specifications for universal application in all sectors in all regions, but there are established principles and practices, which are reflected in these PBDs.

There are considerable advantages in standardizing General Specifications for repetitive Works in recognized public sectors, such as highways, ports, railways, urban housing, irrigation, and water supply, in the same country or region where similar conditions prevail. The General Specifications should cover all classes of workmanship, materials, and equipment commonly involved in construction, although not necessarily to be used in a particular Works Contract. Deletions or addenda should then adapt the General Specifications to the particular Works.

Care must be taken in drafting specifications to ensure that they are not restrictive. In the specification of standards for goods, materials, and workmanship, recognized international standards should be used as much as possible. Where other particular standards are used, whether national standards or other standards, the specifications should state that goods, materials, and workmanship that meet other authoritative standards, and which ensure substantially equal or higher quality than the standards mentioned, will also be acceptable. The following clause may be inserted in the SCC.

Sample Clause: Equivalency of Standards and Codes

Wherever reference is made in the Contract to specific standards and codes to be met by the goods and materials to be furnished, and work performed or tested, the provisions of the latest current edition or revision of the relevant standards and codes in effect shall apply, unless otherwise expressly stated in the Contract. Where such standards and codes are national, or relate to a particular country or region, other authoritative standards that

ensure a substantially equal or higher quality than the standards and codes specified will be accepted subject to the Procuring Entity's Representative's prior review and written consent. Differences between the standards specified and the proposed alternative standards shall be fully described in writing by the Contractor and submitted to the Procuring Entity's Representative at least twenty-eight (28) days prior to the date when the Contractor desires the Procuring Entity's Representative's consent. In the event the Procuring Entity's Representative determines that such proposed deviations do not ensure substantially equal or higher quality, the Contractor shall comply with the standards specified in the documents.

These notes are intended only as information for the Procuring Entity or the person drafting the Bidding Documents. They should not be included in the final Bidding Documents.

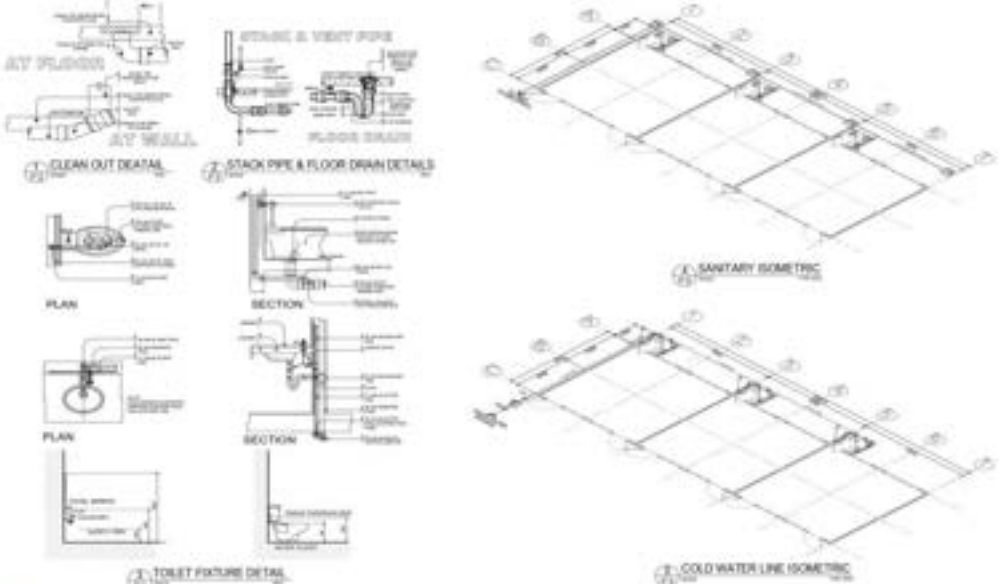
Section VII. Drawings

[Insert here a list of Drawings. The actual Drawings, including site plans, should be attached to this section, or annexed in a separate folder.]



1
A-1
EXTERIOR PERSPECTIVE
SCE

	DATE: 01/01/2018 TIME: 10:00 AM	PROJECT: 01/01/2018 TIME: 10:00 AM	DRAWING NO.: 01/01/2018 TIME: 10:00 AM	CLIENT: 01/01/2018 TIME: 10:00 AM	DESIGNER: 01/01/2018 TIME: 10:00 AM	CHECKER: 01/01/2018 TIME: 10:00 AM	SCALE: 1:100 SHEET NO.: A-1 TOTAL SHEETS: 4
	PROJECT: 01/01/2018 TIME: 10:00 AM						



1
P-2
SANITARY ISOMETRIC
SCE

1
P-2
COLD WATER LINE ISOMETRIC
SCE

1
P-2
TOILET FIXTURE DETAIL
SCE

1
P-2
STACK PIPE & FLOOR DRAIN DETAILS
SCE


1
P-2
CLEAN OUT DETAIL
SCE

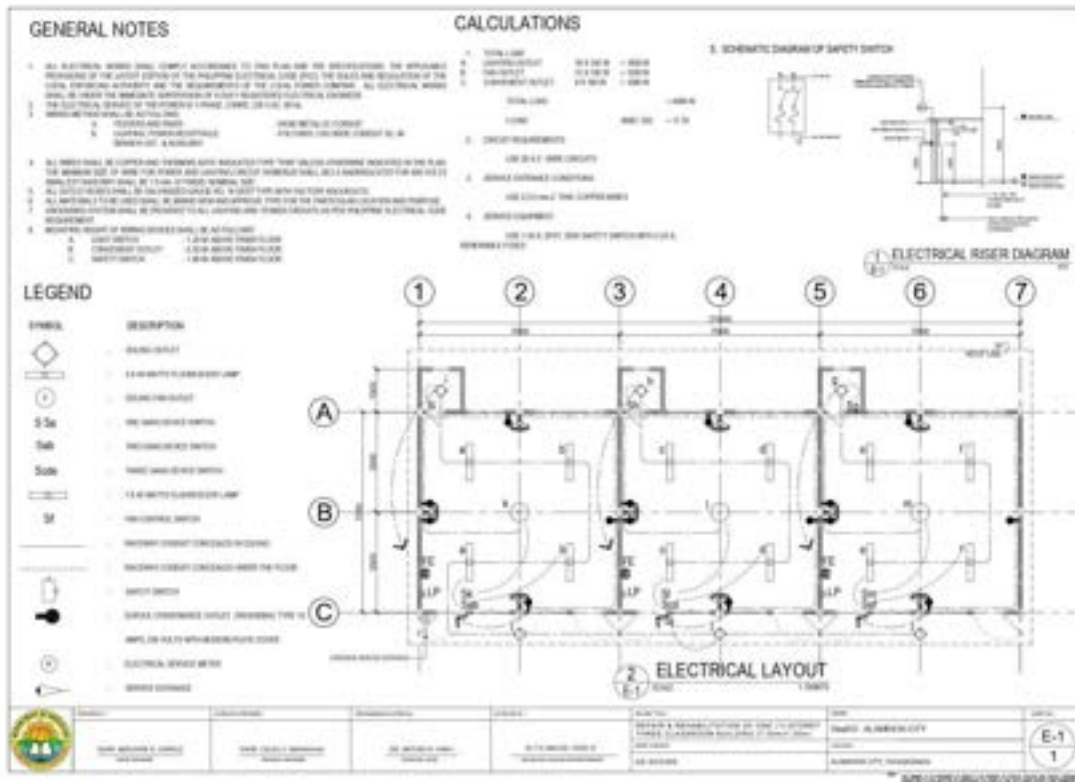
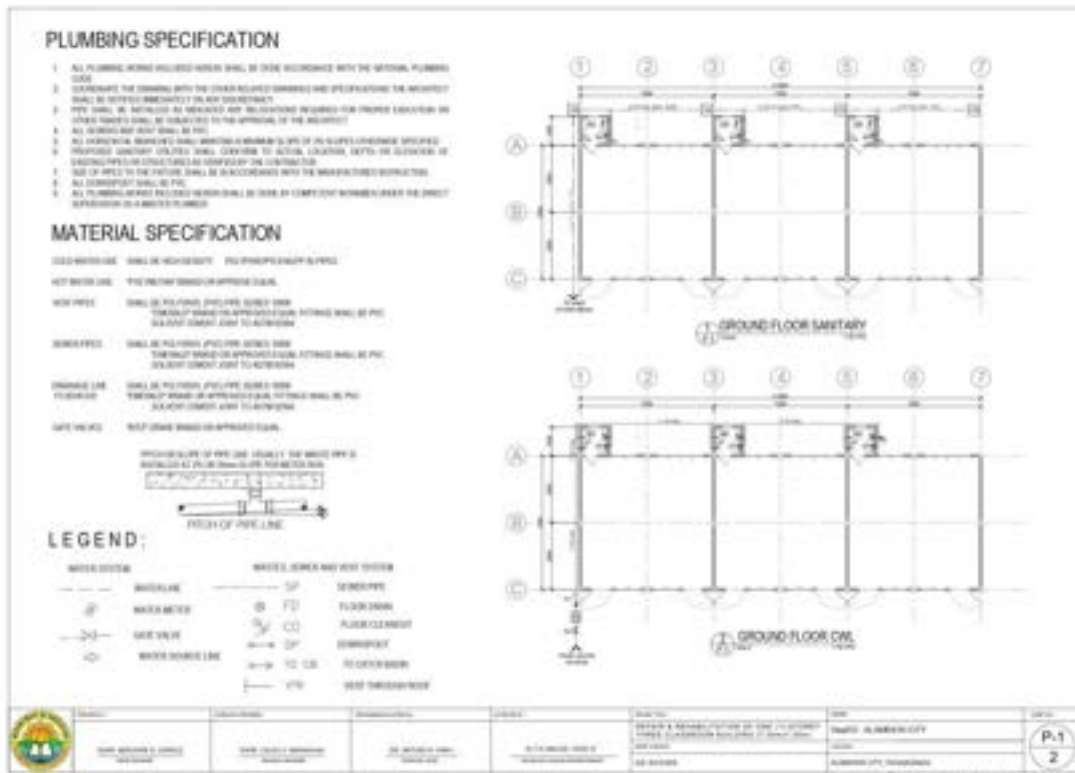
1
P-2
PLAN
SCE

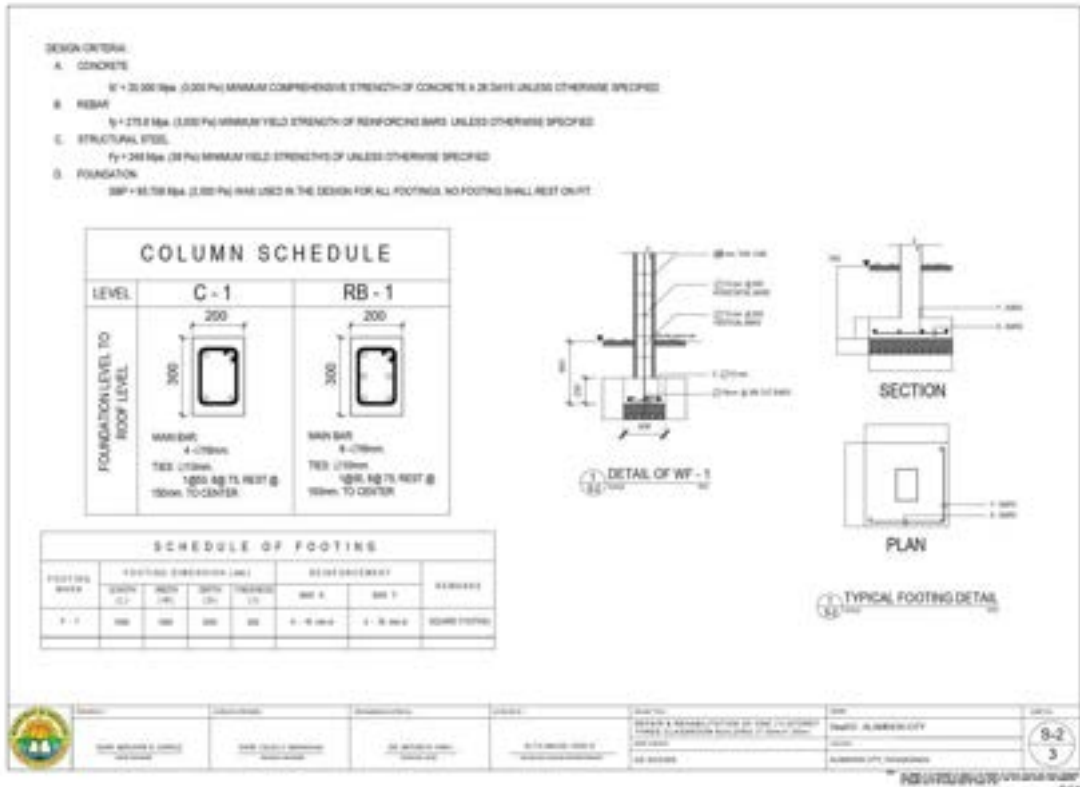
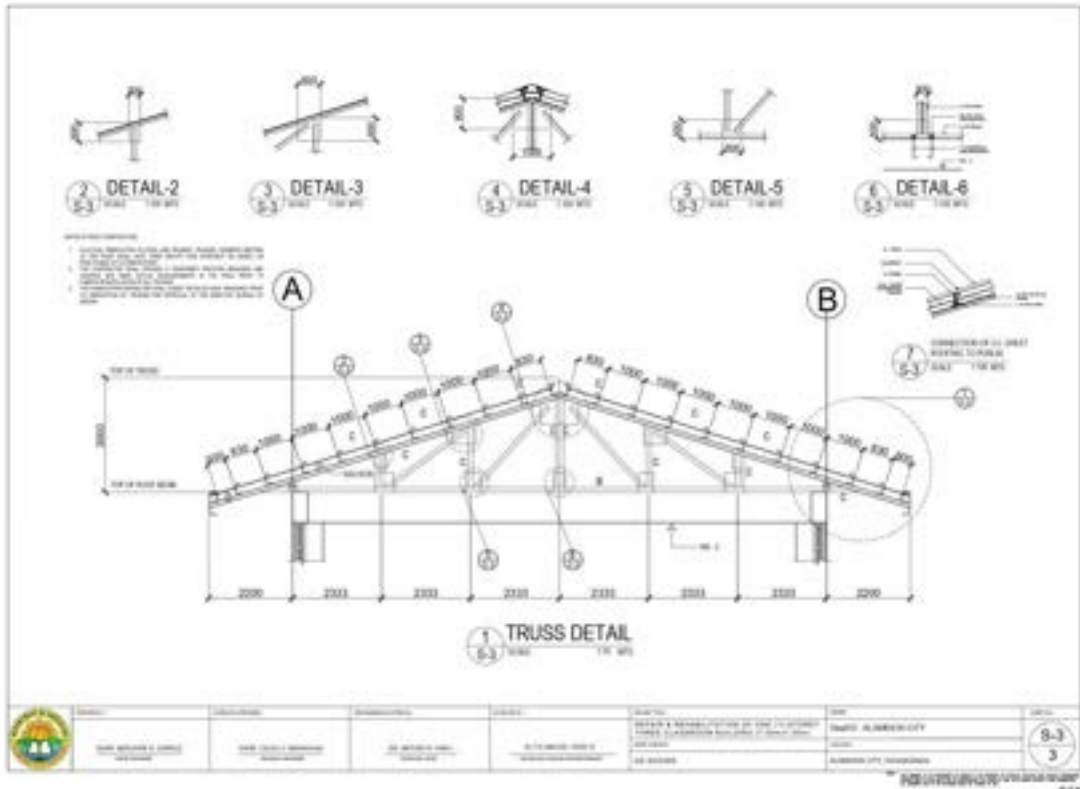
1
P-2
SECTION
SCE

1
P-2
PLAN
SCE

1
P-2
SECTION
SCE

	DATE: 01/01/2018 TIME: 10:00 AM	PROJECT: 01/01/2018 TIME: 10:00 AM	DRAWING NO.: 01/01/2018 TIME: 10:00 AM	CLIENT: 01/01/2018 TIME: 10:00 AM	DESIGNER: 01/01/2018 TIME: 10:00 AM	CHECKER: 01/01/2018 TIME: 10:00 AM	SCALE: 1:100 SHEET NO.: P-2 TOTAL SHEETS: 2
	PROJECT: 01/01/2018 TIME: 10:00 AM						





1 SECTION

2 TYP. CLG. VENT SECTION DETAIL

80x40 TANTLER
80x40 TANTLER
INSECT WOOD WPT.
INSECT WOOD WPT.
INSECT WOOD WPT.
INSECT WOOD WPT.
INSECT WOOD WPT.
INSECT WOOD WPT.
INSECT WOOD WPT.
INSECT WOOD WPT.
INSECT WOOD WPT.
INSECT WOOD WPT.
INSECT WOOD WPT.

300

3 TYP. CLG. VENT SECTION DETAIL

REFLECTED CEILING PLAN

4 PERSPECTIVE

PROJECT NO.	CLIENT	DESIGN NO.	DATE	SCALE
14	14	14	14	14

A TYPICAL DETAIL SECTION OF DOOR (FRONT)

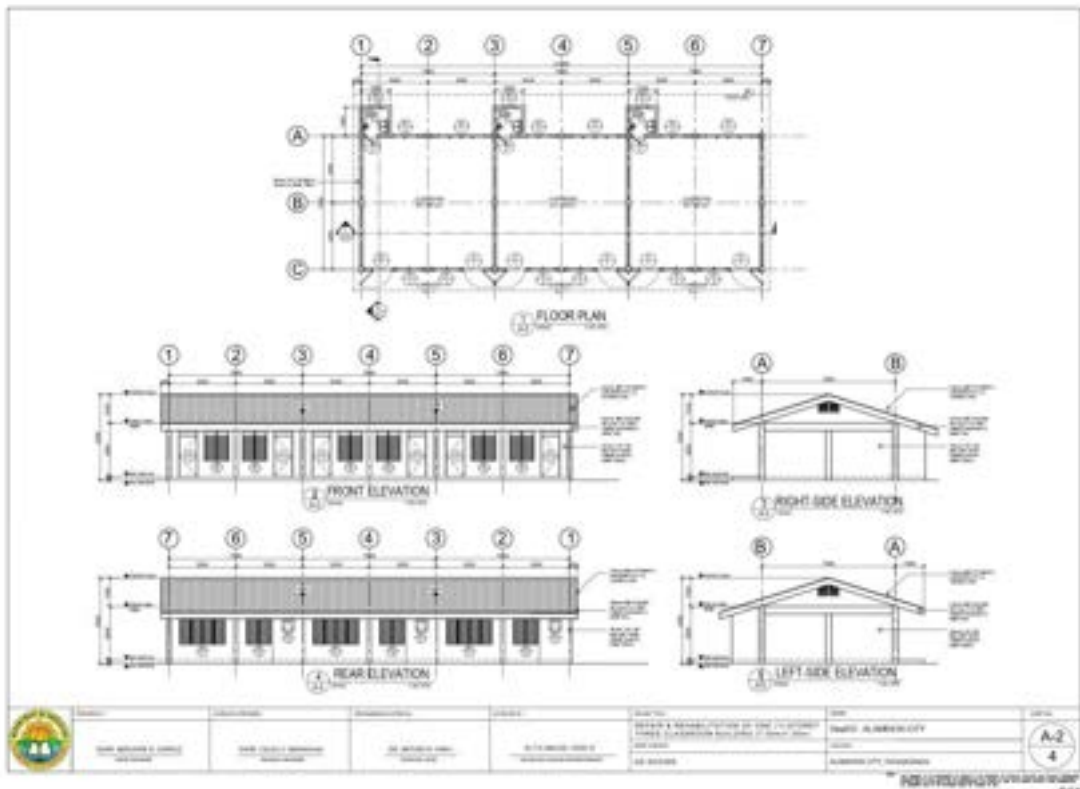
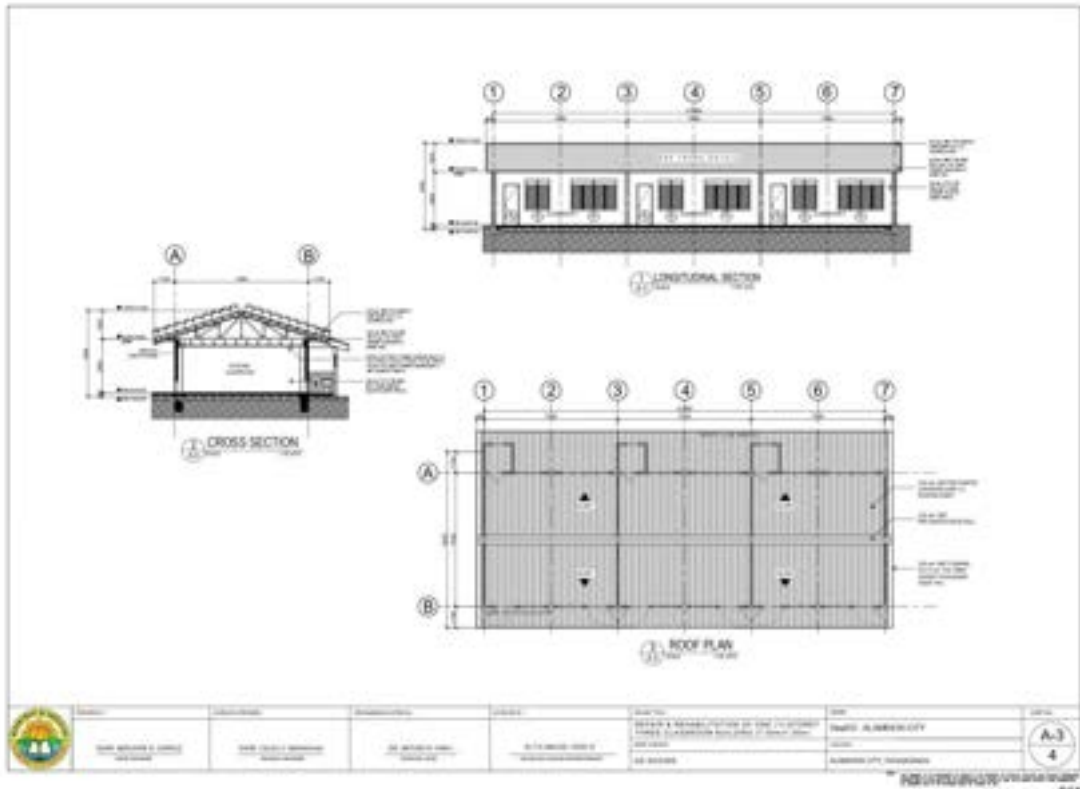
1 SCHEDULES OF DOORS AND WINDOWS

A SECTION A - COMFORT ROOM DETAILS

B SECTION B - COMFORT ROOM DETAILS

1 ROOF FRAMING PLAN

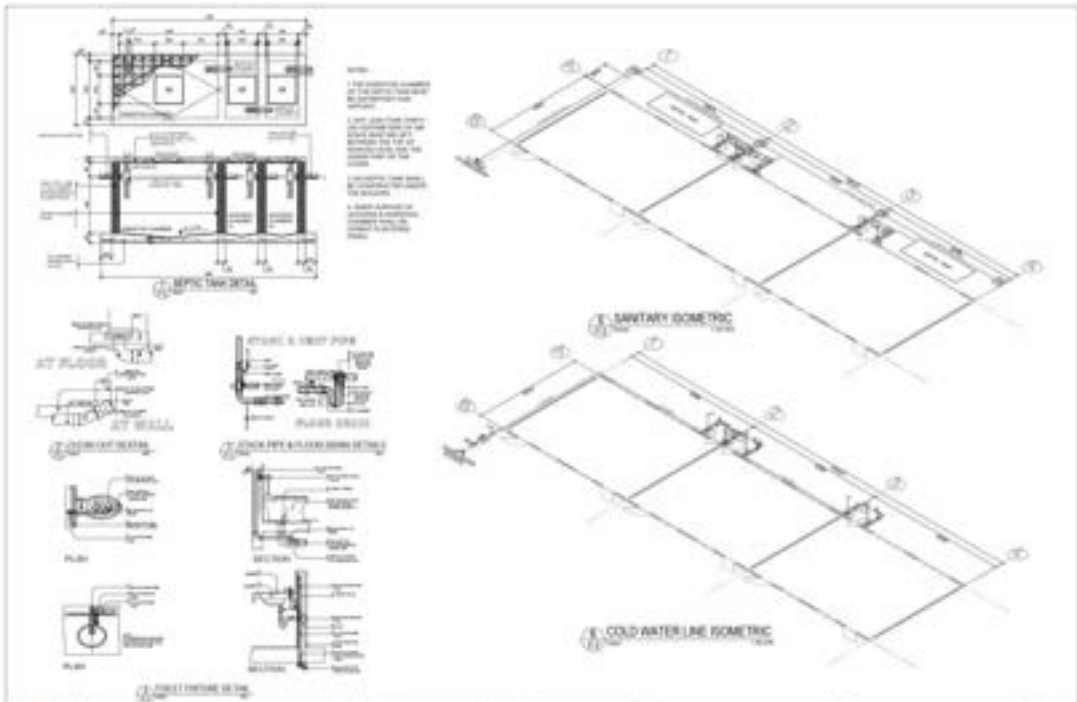
PROJECT NO.	CLIENT	DESIGN NO.	DATE	SCALE
14	14	14	14	14



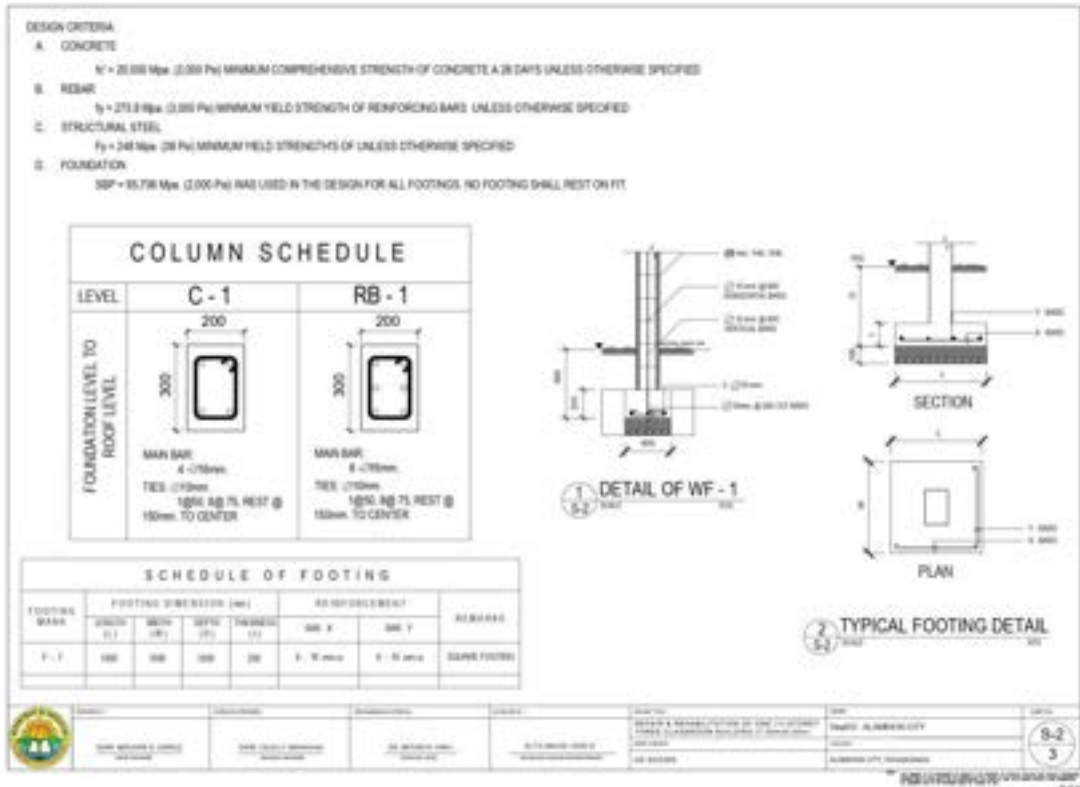
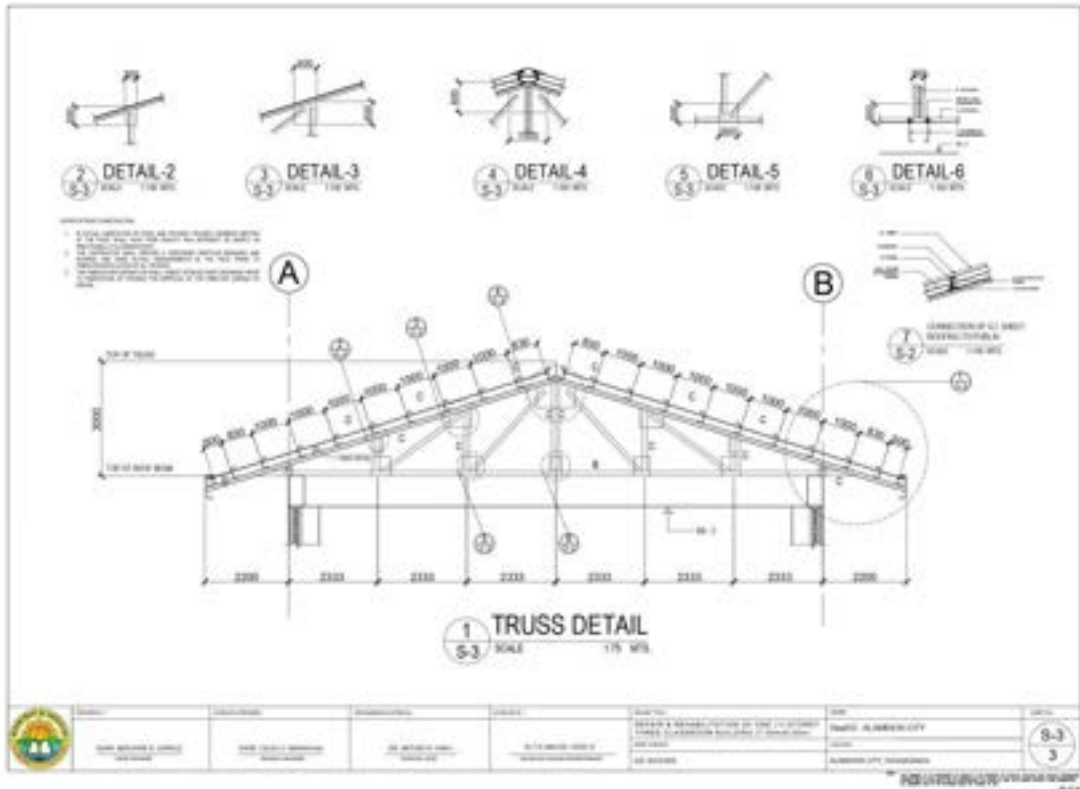


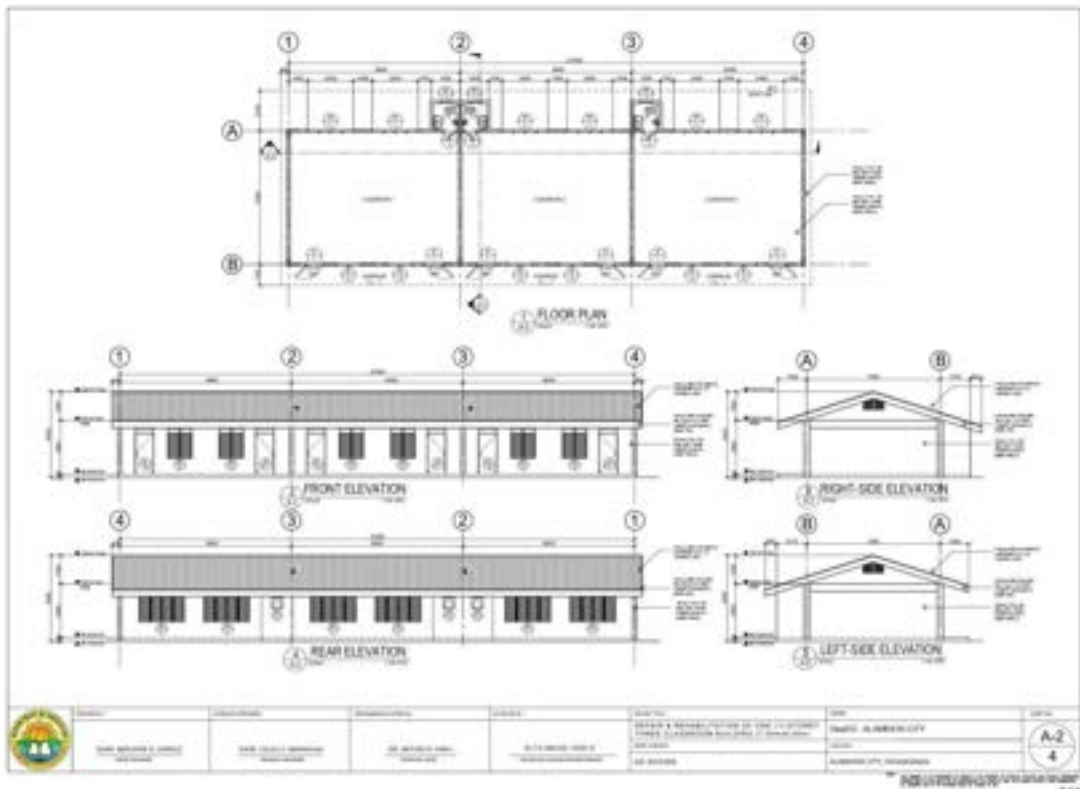
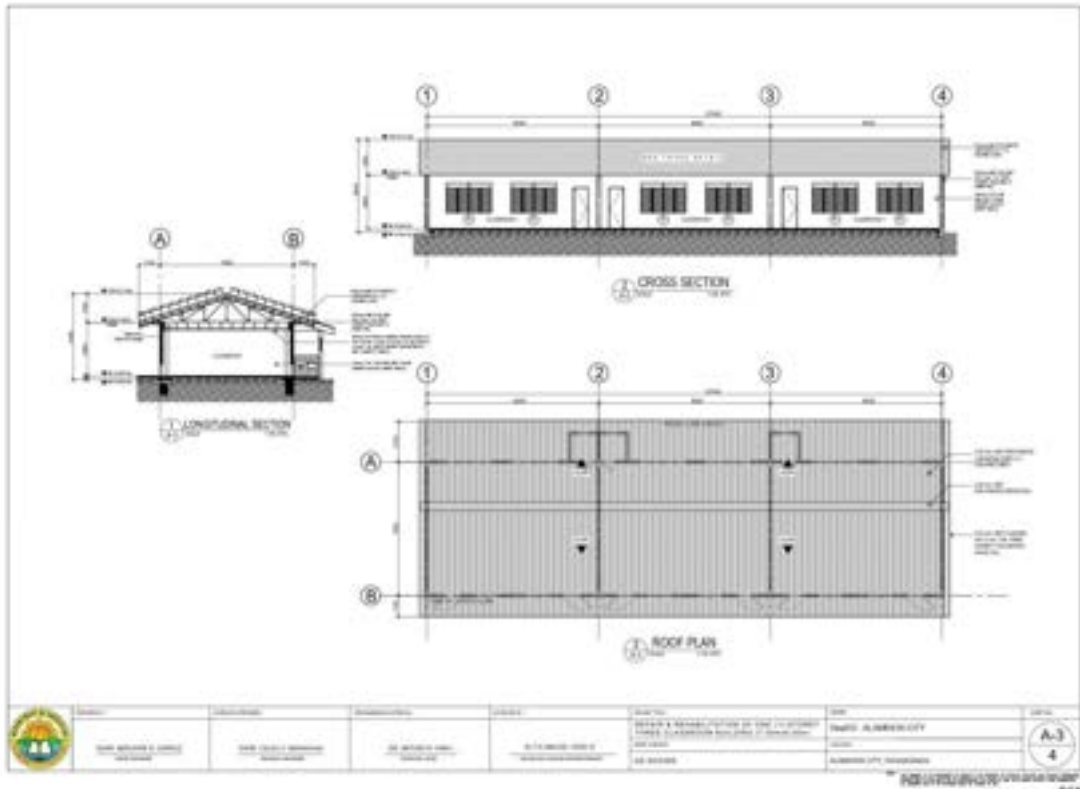
1
A-1
EXTERIOR PERSPECTIVE
DATE: _____

	Name: _____ Title: _____	Name: _____ Title: _____	Name: _____ Title: _____	Name: _____ Title: _____	Name: _____ Title: _____	Name: _____ Title: _____	Name: _____ Title: _____
	Project Name: _____ Location: _____				Date: _____ Scale: _____		Page No.: _____ Total Pages: _____



	Name: _____ Title: _____	Name: _____ Title: _____	Name: _____ Title: _____	Name: _____ Title: _____	Name: _____ Title: _____	Name: _____ Title: _____	Name: _____ Title: _____
	Project Name: _____ Location: _____				Date: _____ Scale: _____		Page No.: _____ Total Pages: _____







EXTERIOR PERSPECTIVE
SCALE

	NAME OF THE PROJECT PROJECT TITLE	NAME OF THE DESIGNER DESIGNER NAME	NAME OF THE CLIENT CLIENT NAME	ADDRESS ADDRESS	CITY CITY	STATE STATE	COUNTRY COUNTRY
	DATE OF SUBMISSION DATE	DATE OF APPROVAL DATE	DATE OF REVIEW DATE	DATE OF REVISION DATE	DATE OF REVISION DATE	DATE OF REVISION DATE	DATE OF REVISION DATE

GENERAL NOTES

- All electrical works shall comply according to the rules and regulations the applicable provisions of the latest edition of the National Electrical Code (NEC), the latest edition of the local electrical codes and the requirements of the local power company. All electrical works shall be done in accordance with the National Electrical Code, the latest edition of the local electrical codes and the requirements of the local power company.
- Minimum clearance shall be maintained as follows:
 - Overhead lines - 10' above finished ground
 - Underground lines - 18" above finished ground
- All wires shall be carried and supported in accordance with the applicable provisions of the National Electrical Code (NEC), the latest edition of the local electrical codes and the requirements of the local power company. All electrical works shall be done in accordance with the National Electrical Code, the latest edition of the local electrical codes and the requirements of the local power company.
- All electrical work shall be done in accordance with the National Electrical Code, the latest edition of the local electrical codes and the requirements of the local power company.
- All electrical work shall be done in accordance with the National Electrical Code, the latest edition of the local electrical codes and the requirements of the local power company.
- Minimum clearance shall be maintained as follows:
 - Overhead lines - 10' above finished ground
 - Underground lines - 18" above finished ground

CALCULATIONS

1. TOTAL LOAD	10000 VA
2. CIRCUIT BREAKER	10000 VA
3. CONDUCTOR SIZE	10000 VA
4. CIRCUIT REQUIREMENTS	10000 VA

SEE FIGURE 1 FOR ELECTRICAL RISER DIAGRAM

LEGEND

SYMBOL	DESCRIPTION
	1500VA CB
	20AMP/1000VA CB
	30AMP/1500VA CB
	40AMP/2000VA CB
	50AMP/2500VA CB
	60AMP/3000VA CB
	70AMP/3500VA CB
	80AMP/4000VA CB
	90AMP/4500VA CB
	100AMP/5000VA CB
	110AMP/5500VA CB
	120AMP/6000VA CB
	130AMP/6500VA CB
	140AMP/7000VA CB
	150AMP/7500VA CB
	160AMP/8000VA CB
	170AMP/8500VA CB
	180AMP/9000VA CB
	190AMP/9500VA CB
	200AMP/10000VA CB

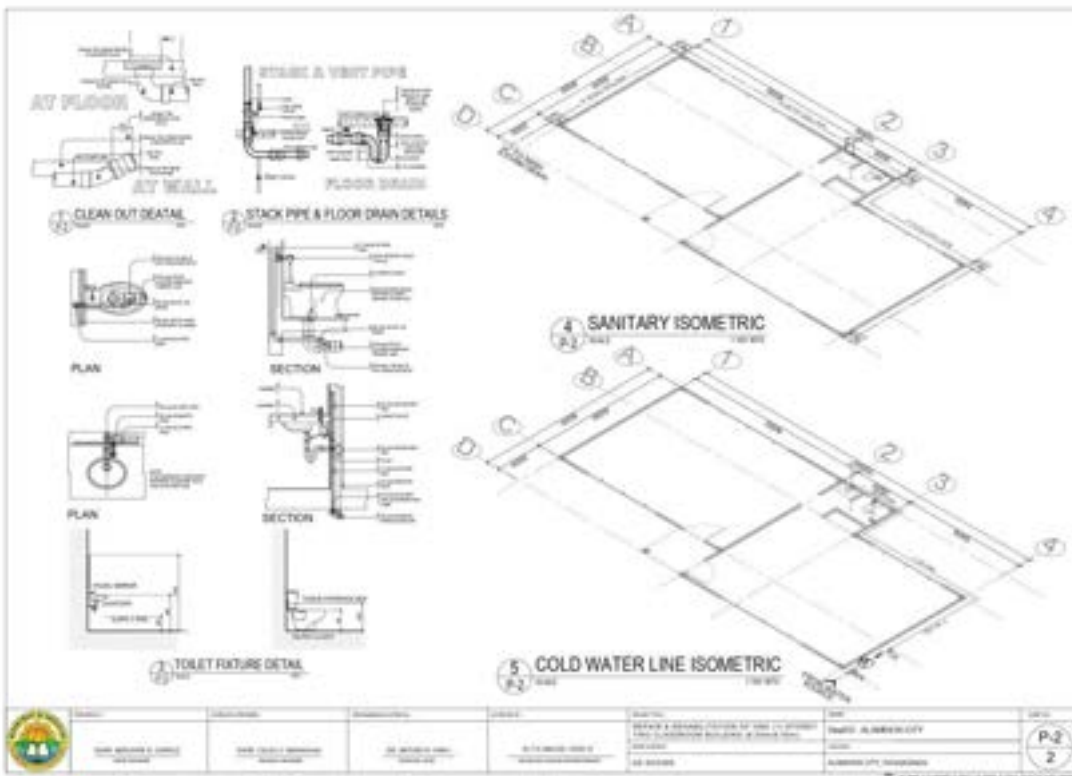
ELECTRICAL RISER DIAGRAM

ELECTRICAL LAYOUT

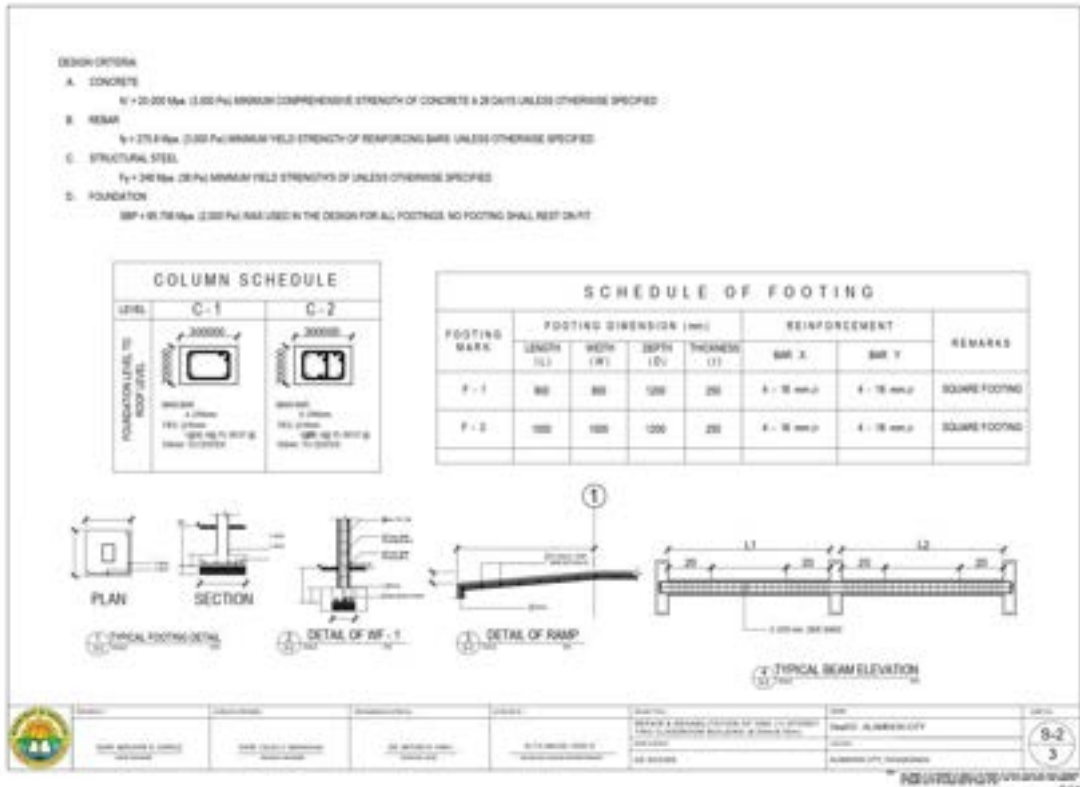
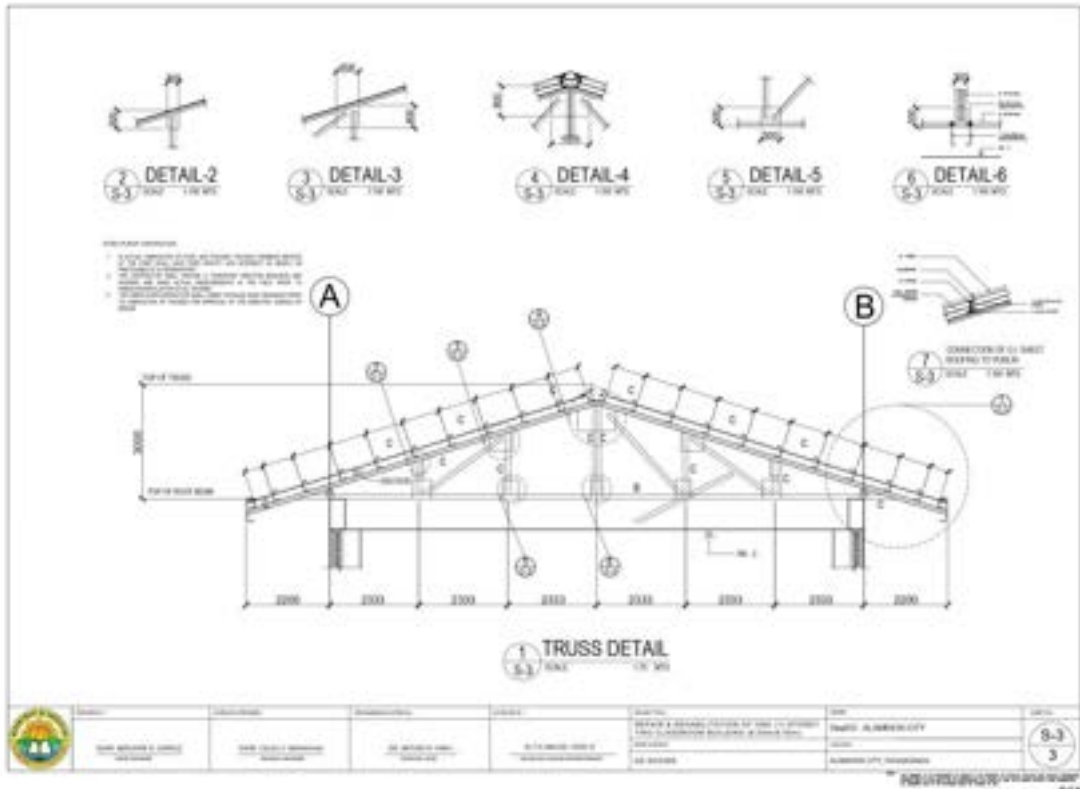


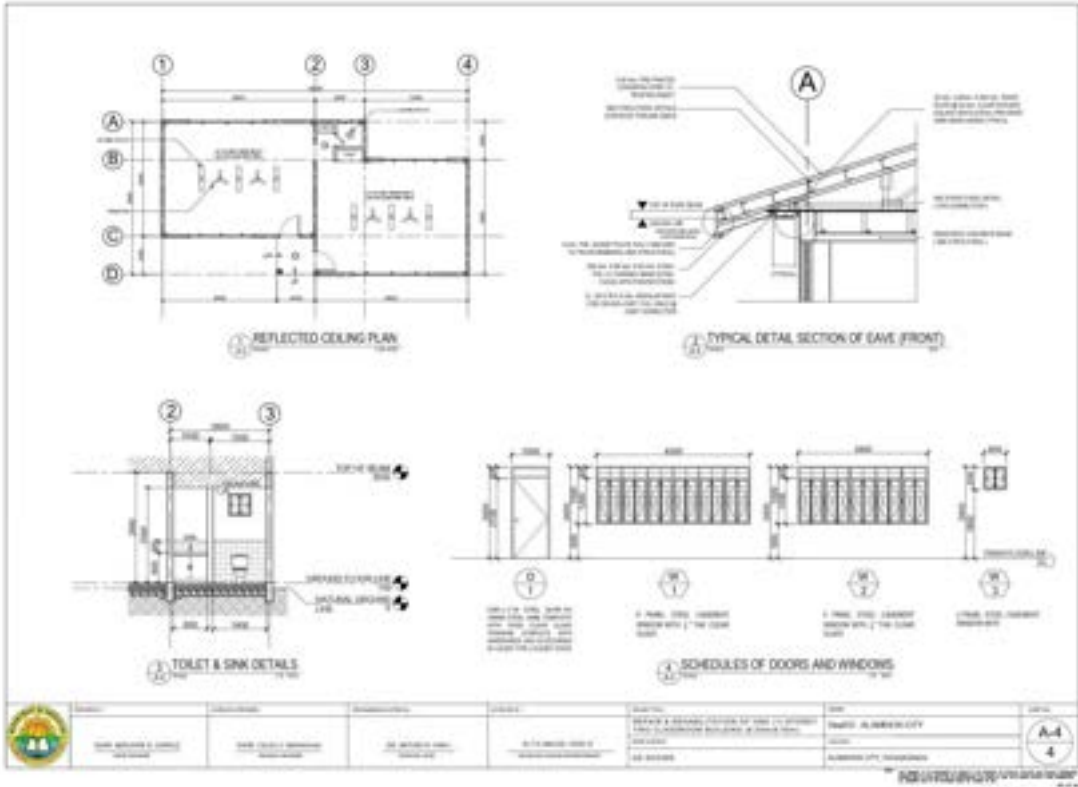
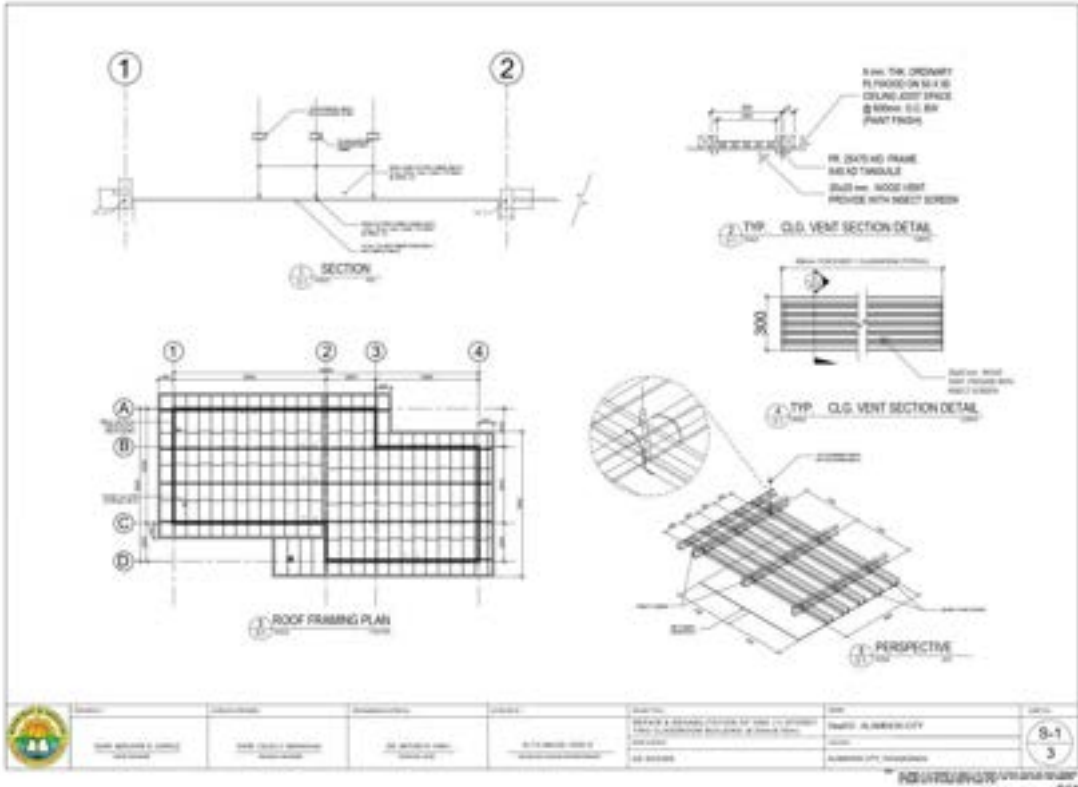
1 EXTERIOR PERSPECTIVE
A-1 1/2" = 1'-0"

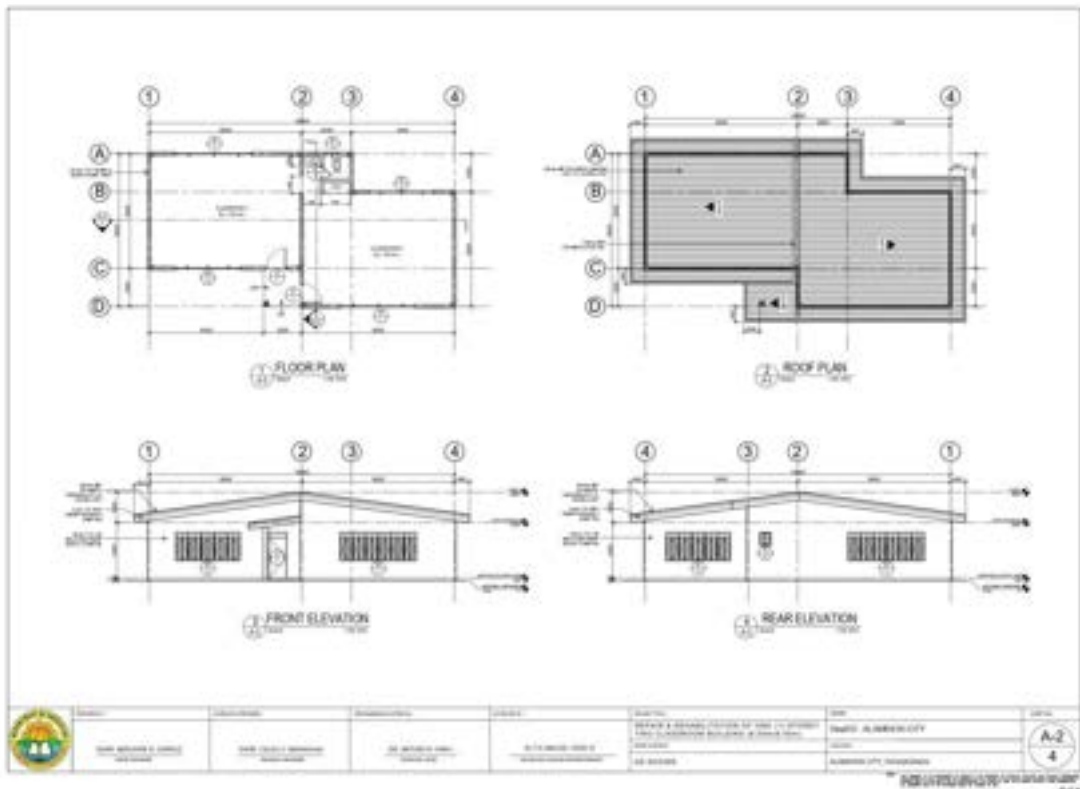
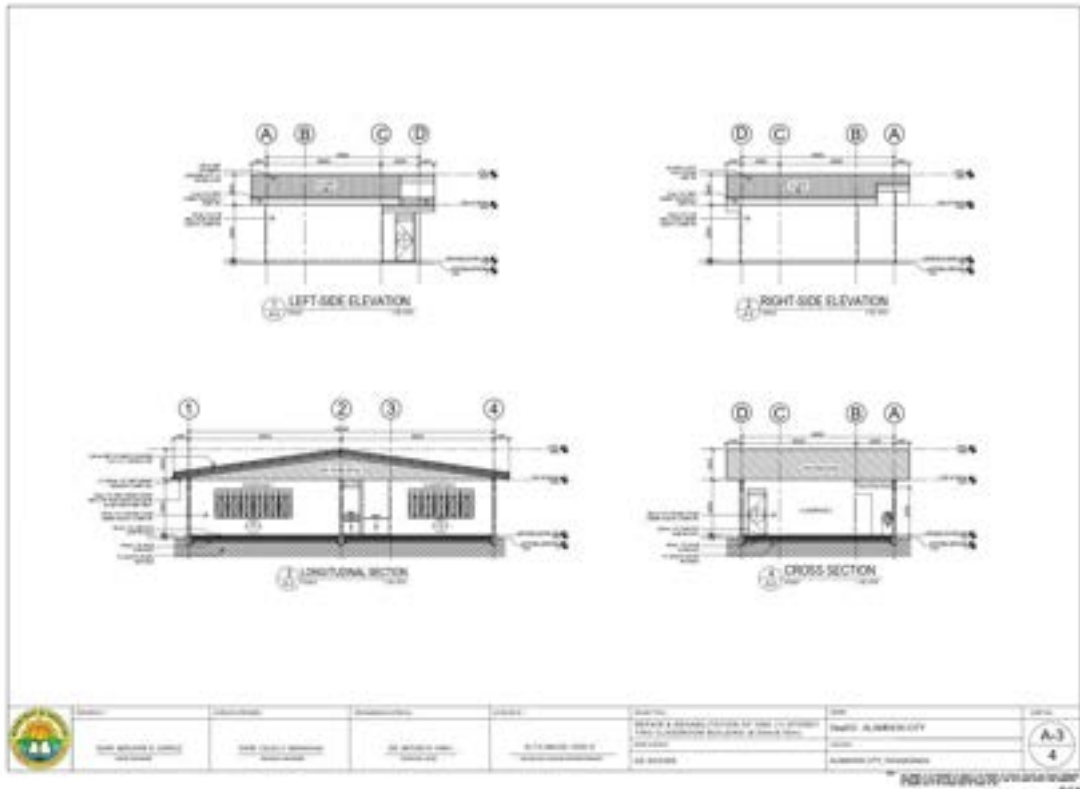
	ARCHITECT: DR. MARCO A. VELAZQUEZ PROJECT: DR. MARCO A. VELAZQUEZ	ARCHITECTURE: DR. MARCO A. VELAZQUEZ PROJECT: DR. MARCO A. VELAZQUEZ	CIVIL: DR. MARCO A. VELAZQUEZ PROJECT: DR. MARCO A. VELAZQUEZ	ELECTRICAL: DR. MARCO A. VELAZQUEZ PROJECT: DR. MARCO A. VELAZQUEZ	MECHANICAL: DR. MARCO A. VELAZQUEZ PROJECT: DR. MARCO A. VELAZQUEZ	DATE: 2023-10-10 PROJECT: DR. MARCO A. VELAZQUEZ	SHEET: A-1 TOTAL SHEETS: 4
	UNIVERSITY OF THE PHILIPPINES - DILIMAN DEPARTMENT OF ARCHITECTURE						



	ARCHITECT: DR. MARCO A. VELAZQUEZ PROJECT: DR. MARCO A. VELAZQUEZ	ARCHITECTURE: DR. MARCO A. VELAZQUEZ PROJECT: DR. MARCO A. VELAZQUEZ	CIVIL: DR. MARCO A. VELAZQUEZ PROJECT: DR. MARCO A. VELAZQUEZ	ELECTRICAL: DR. MARCO A. VELAZQUEZ PROJECT: DR. MARCO A. VELAZQUEZ	MECHANICAL: DR. MARCO A. VELAZQUEZ PROJECT: DR. MARCO A. VELAZQUEZ	DATE: 2023-10-10 PROJECT: DR. MARCO A. VELAZQUEZ	SHEET: P-2 TOTAL SHEETS: 2
	UNIVERSITY OF THE PHILIPPINES - DILIMAN DEPARTMENT OF ARCHITECTURE						



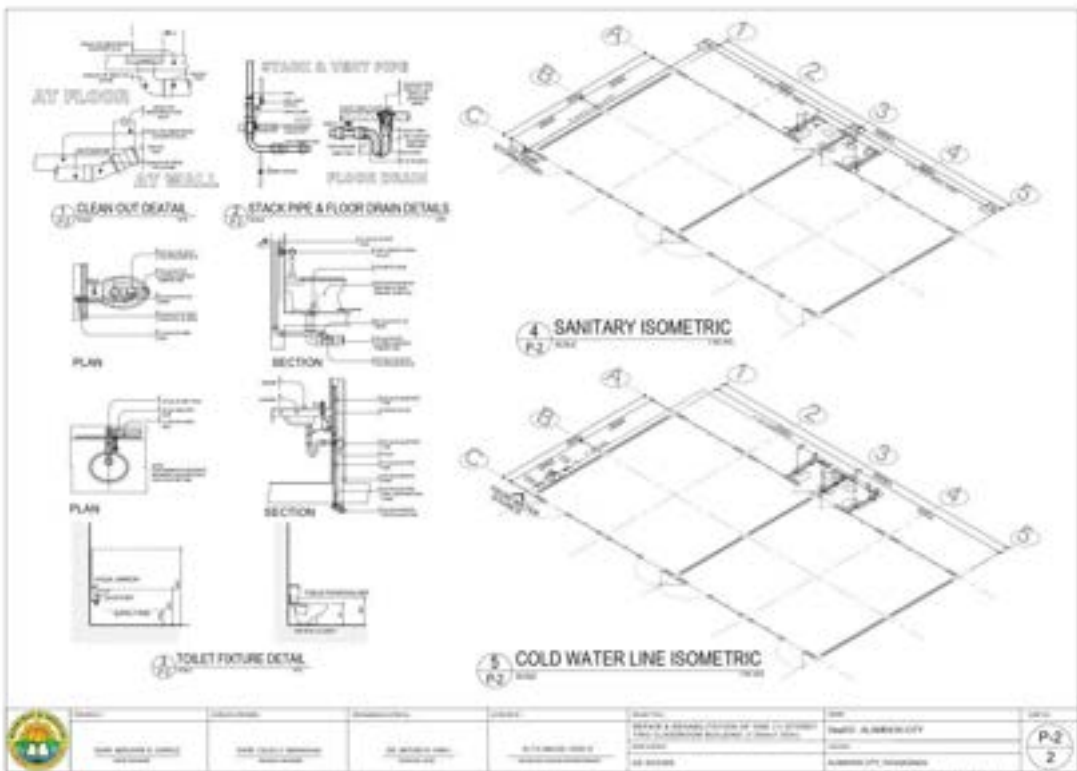




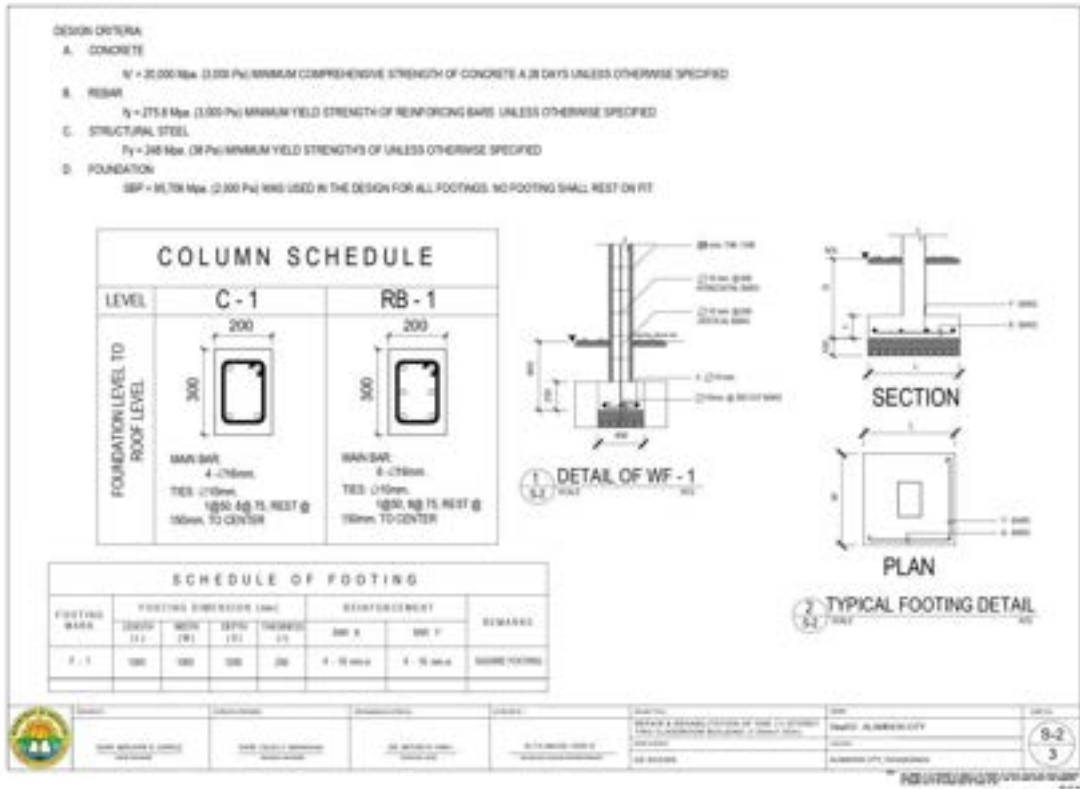
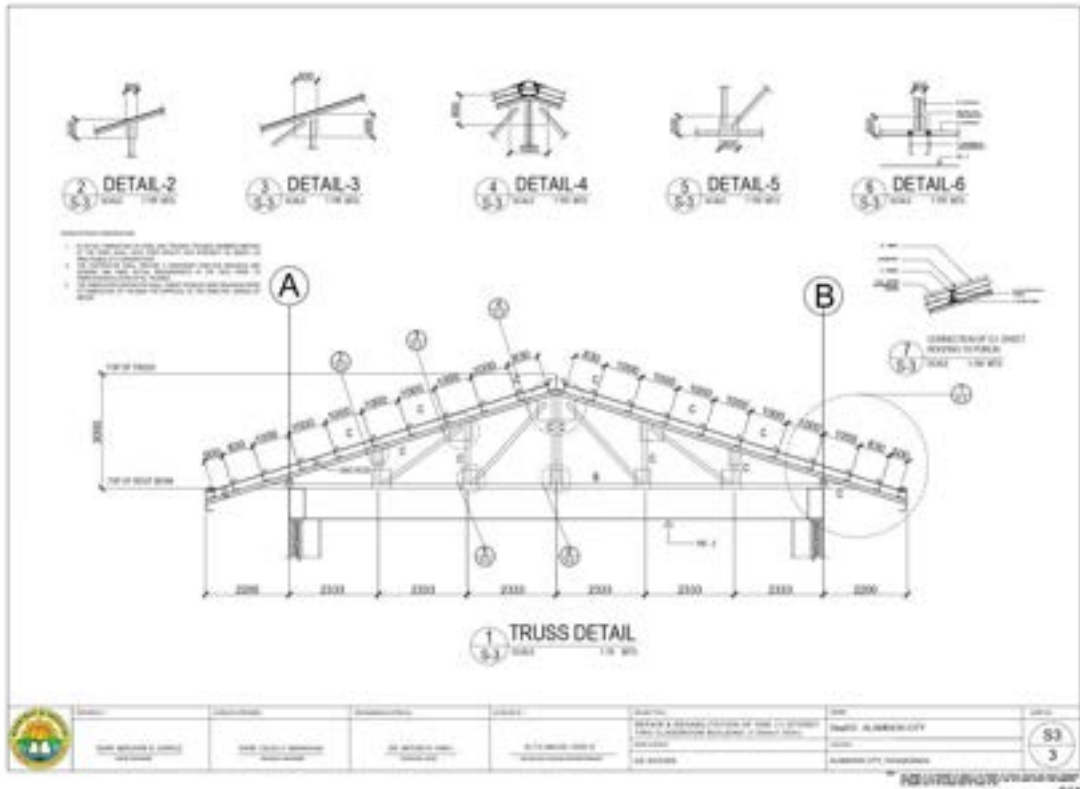


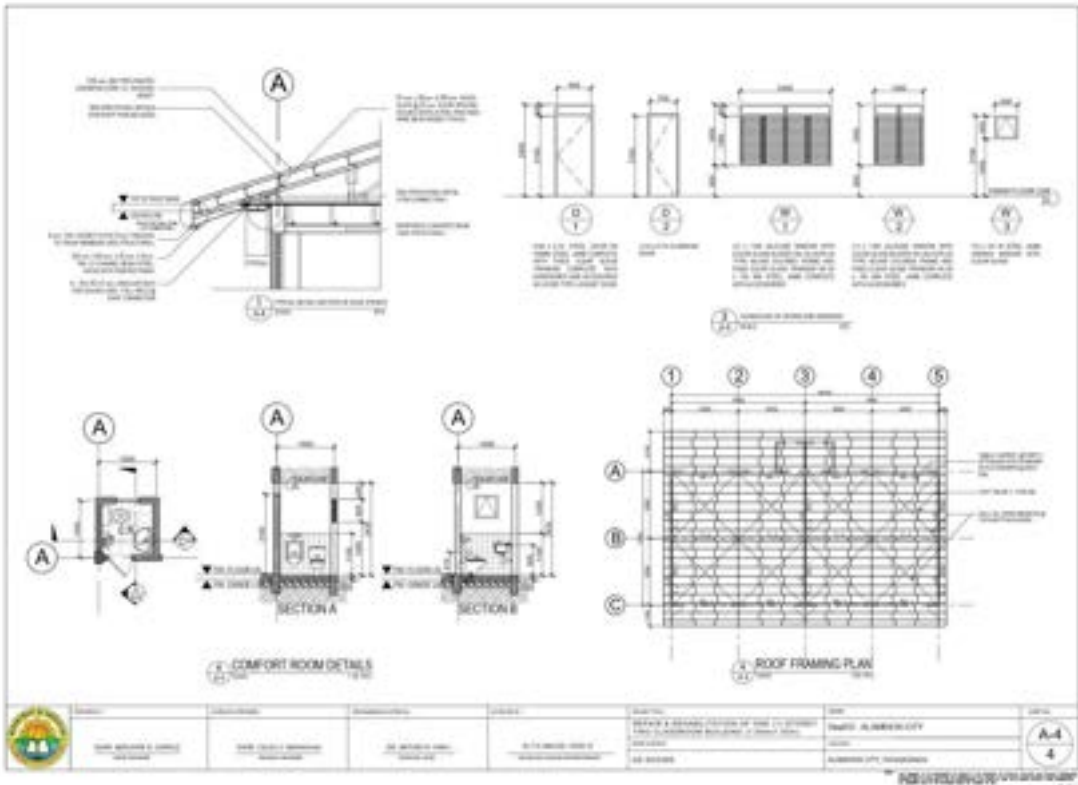
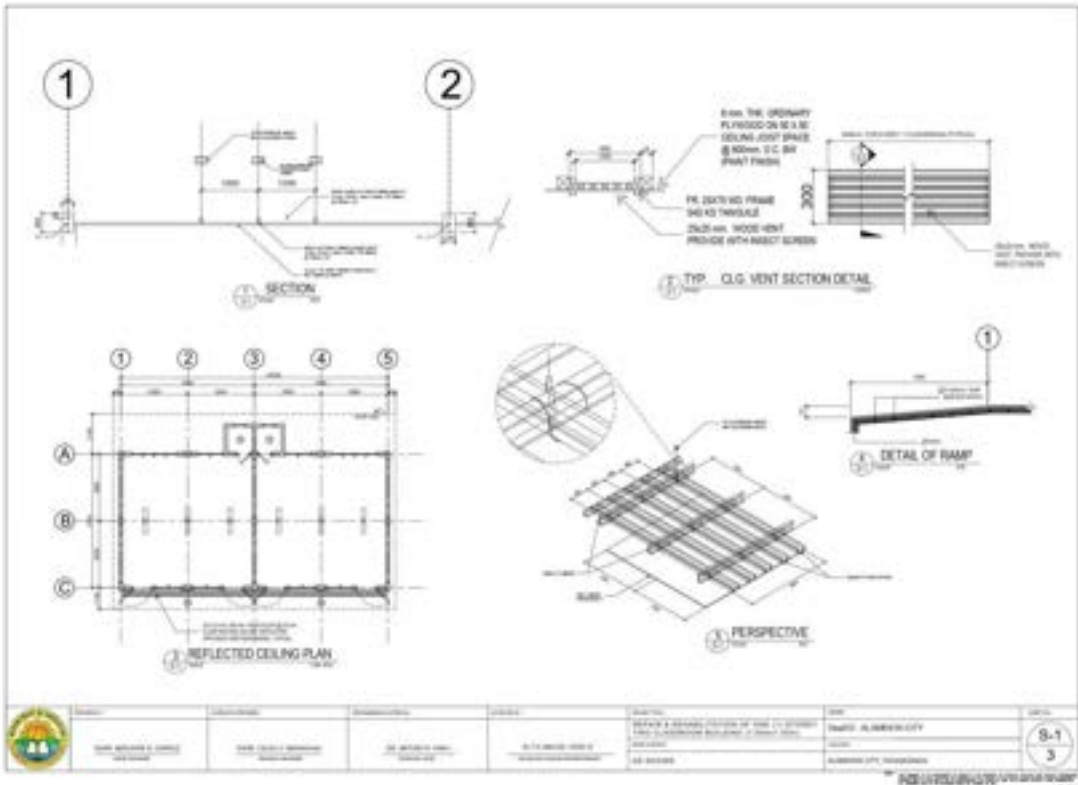
1
A.1
EXTERIOR PERSPECTIVE
10/08

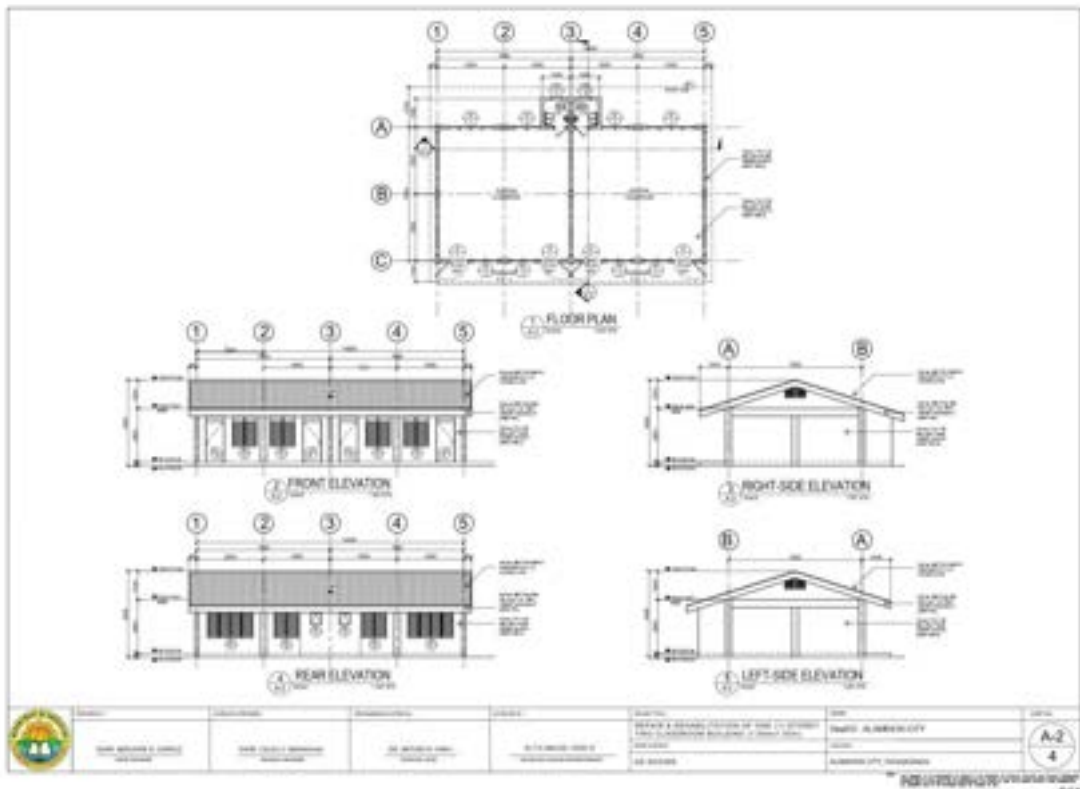
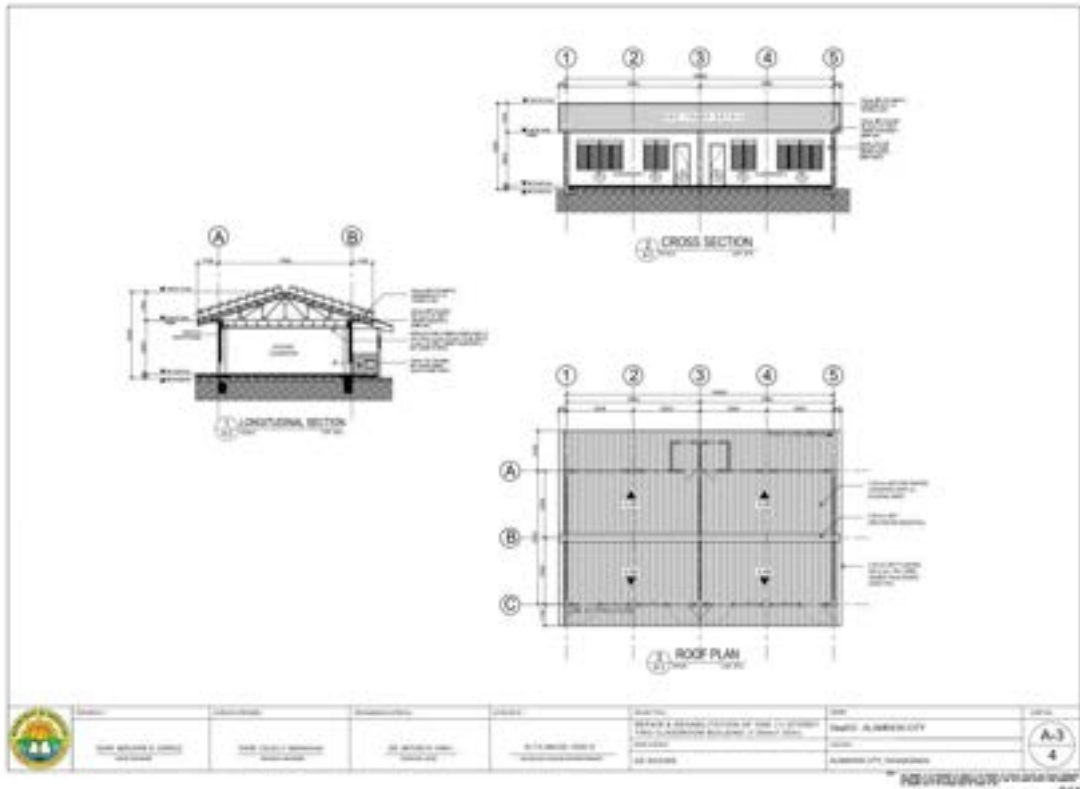
	SUBJECT: REPAIR & RENOVATION OF THE EXISTING TOILET BUILDING IN SAMA-SAMA	COURSE: BS ARCHITECTURE	SECTION: REPAIR & RENOVATION OF THE EXISTING TOILET BUILDING IN SAMA-SAMA	DATE: 2024	PAGE: 4
	DESIGNER: MARK ANTONIO G. SORIANO	CHECKER: MARK ANTONIO G. SORIANO	APPROVER: MARK ANTONIO G. SORIANO	CLIENT: UNIVERSITY OF THE PHILIPPINES - SAMA-SAMA	PROJECT NO.: 2024-001



	SUBJECT: REPAIR & RENOVATION OF THE EXISTING TOILET BUILDING IN SAMA-SAMA	COURSE: BS ARCHITECTURE	SECTION: REPAIR & RENOVATION OF THE EXISTING TOILET BUILDING IN SAMA-SAMA	DATE: 2024	PAGE: 2
	DESIGNER: MARK ANTONIO G. SORIANO	CHECKER: MARK ANTONIO G. SORIANO	APPROVER: MARK ANTONIO G. SORIANO	CLIENT: UNIVERSITY OF THE PHILIPPINES - SAMA-SAMA	PROJECT NO.: 2024-001







Section VIII. Bill of Quantities

Notes on the Bill of Quantities

Objectives

The objectives of the Bill of Quantities are:

- a. to provide sufficient information on the quantities of Works to be performed to enable Bids to be prepared efficiently and accurately; and
- b. when a Contract has been entered into, to provide a priced Bill of Quantities for use in the periodic valuation of Works executed.

In order to attain these objectives, Works should be itemized in the Bill of Quantities in sufficient detail to distinguish between the different classes of Works, or between Works of the same nature carried out in different locations or in other circumstances which may give rise to different considerations of cost. Consistent with these requirements, the layout and content of the Bill of Quantities should be as simple and brief as possible.

Daywork Schedule

A Daywork Schedule should be included only if the probability of unforeseen work, outside the items included in the Bill of Quantities, is high. To facilitate checking by the Entity of the realism of rates quoted by the Bidders, the Daywork Schedule should normally comprise the following:

- a. A list of the various classes of labor, materials, and Constructional Plant for which basic daywork rates or prices are to be inserted by the Bidder, together with a statement of the conditions under which the Contractor will be paid for work executed on a daywork basis.
- b. Nominal quantities for each item of Daywork, to be priced by each Bidder at Daywork rates as Bid. The rate to be entered by the Bidder against each basic Daywork item should include the Contractor's profit, overheads, supervision, and other charges.

Provisional Sums

A general provision for physical contingencies (quantity overruns) may be made by including a provisional sum in the Summary Bill of Quantities. Similarly, a contingency allowance for possible price increases should be provided as a provisional sum in the Summary Bill of Quantities. The inclusion of such provisional sums often facilitates budgetary approval by avoiding the need to request periodic supplementary approvals as the future need arises. Where such provisional sums or contingency allowances are used, the SCC should state the manner in which they will be used, and under whose authority (usually the Procuring Entity's Representative's).

The estimated cost of specialized work to be carried out, or of special goods to be supplied, by other contractors should be indicated in the relevant part of the Bill of Quantities as a particular provisional sum with an appropriate brief description. A separate procurement procedure is normally carried out by the Procuring Entity to select such specialized contractors. To provide an element of competition among the Bidders in respect of any facilities, amenities, attendance, etc., to be provided by the successful Bidder as prime Contractor for the use and convenience of the specialist contractors, each related provisional sum should be followed by an item in the Bill of Quantities inviting the Bidder to quote a sum for such amenities, facilities, attendance, etc.

Signature Box

A signature box shall be added at the bottom of each page of the Bill of Quantities where the authorized representative of the Bidder shall affix his signature. Failure of the authorized representative to sign each and every page of the Bill of Quantities shall be a cause for rejection of his bid.

These Notes for Preparing a Bill of Quantities are intended only as information for the Procuring Entity or the person drafting the Bidding Documents. They should not be included in the final documents.

logo of the contractor

School PANGAPISAN INTEGRATED SCHOOL		Date: JULY 2024				
School LD 500564		Approved Budget for the Contract: Php 6252810.46				
Region 1		Completion Period: 150 CD				
Division ALAMINOS CITY		Minimum Required Manpower:				
Project Title :		General Foreman Welder Carpenter				
PROPOSED REPAIR AND REHABILITATION OF SCHOOL BUILDINGS- (13CL)		Helper Mason Painter				
Location :PANGAPISAN, ALAMINOS CITY PANGASINAN		Minimum Required Equipment:				
		Hand Tools Welding Machine				
		One-Bagger Mixer Bar Cutter				
ITEM NO.	Item Description	% of Total	Unit	Quantity	Total Cost	Remarks
	I. DIRECT COST					
	GENERAL REQUIREMENTS		lot	1.00		
BLDG#1	(7MX7M)- 3CL					
1.000	Earthworks		cu.m	4.50		
2.000	Concreting Works		cu.m	5.50		
5.000	Masonry Works		sq.m	112.68		
6.000	Doors and Windows		set	21.00		
8.000	Roofing Works		sq.m	267.60		
9.000	Carpentry Works		sq.m	314.20		
10.000	Electrical Works		lot	1.00		
13.000	Painting Works		sq.m	736.62		
14.000	Tile Works		sq.m	176.40		
BLDG#2	(6M X 7.5M)- 4CL (Converted to 3CL - 7mx9m)					
1.000	Earthworks		cu.m	4.50		
2.000	Concreting Works		sq.m	21.80		
3.000	Rebar Works		lot	1.00		
4.000	Form Works		sq.m	199.40		
5.000	Masonry Works		sq.m	728.70		
6.000	Doors and Windows		set	24.00		
7.000	Steel Works		lot	1.00		
8.000	Roofing Works		sq.m	332.80		
9.000	Carpentry Works		sq.m	298.55		
10.000	Electrical Works		lot	1.00		
11.000	Plumbing Works		lot	1.00		
12.000	Sanitary Works		lot	1.00		
13.000	Painting Works		sq.m	911.86		
14.000	Tile Works		sq.m	189.00		
BLDG #4	(7MX9M)- 1CL					
2.000	Concreting Works		cu.m	1.51		
6.000	Doors and Windows		set	6.00		
8.000	Roofing Works		sq.m	114.40		
9.000	Carpentry Works		sq.m	107.48		
10.000	Electrical Works		lot	1.00		
13.000	Painting Works		sq.m	280.70		
BLDG#5	(6MX8M)- 2CL					
6.000	Doors and Windows		set	4.00		
8.000	Roofing Works		sq.m	205.60		
9.000	Carpentry Works		sq.m	181.44		
10.000	Electrical Works		lot	1.00		
13.000	Painting Works		sq.m	378.00		
14.000	Tile Works		sq.m	100.80		

BLDG#6	(7MX7M)- 2CL				
5.000	Masonry Works		sq.m	39.48	
6.000	Doors and Windows		set	12.00	
8.000	Roofing Works		sq.m	176.80	
9.000	Carpentry Works		sq.m	56.24	
10.000	Electrical Works		lot	1.00	
13.000	Painting Works		sq.m	342.34	
14.000	Tile Works		sq.m	102.90	
	Sub-Total				
	II. INDIRECT COST				
	III. TAX				
	IV. TOTAL CONSTRUCTION COST (I + II + III)				

Prepared:



contractor/bidder

logo of the contractor

PROJECT : PROPOSED REPAIR AND REHABILITATION OF SCHOOL BUILDINGS (13CL)
 SCHOOL : PANGAPISAN INTEGRATED SCHOOL
 LOCATION : PANGAPISAN, ALAMINOS CITY PANGASINAN
 OWNER : DEPARTMENT OF EDUCATION

ITEM NO.	DESCRIPTION	UNIT	QTY	UNIT COST		TOTAL COST		GRAND TOTAL
				MATERIAL	LABOR	MATERIAL	LABOR	
GENERAL REQUIREMENTS								
	Mobilization/Temporary Structures, Utilities and Services/Demobilization	lot	1.00					
	Project Billboard	lot	1.00					
	Safety and Health	lot	1.00					
	Sub-total							
BLDG#1	(7MX7M)- 3CL							
1.0000	Earthworks							
	Select fill	cu.m	4.50					
2.0000	Concreting Works (1 classroom)							
	Slab (Concrete Topping of classroom)	cu.m	5.50					
2.0200	Portland Cement	bag	50.00					
2.0300	Crushed Gravel 3/4"	cu.m	5.50					
2.0500	Washed Sand	cu.m	2.75					
	Sub-total							
5.0000	Masonry Works (including comfort ROOM)							
	Masonry Wall	sq.m	112.68					
5.0300	CHB 4" thick	pc	1,409.00					
2.0200	Portland Cement	bag	57.00					
2.0500	Washed Sand	cu.m	5.00					
5.0400	10mm x 6m RSS	kg	150.00					
3.1200	G.I. Tie Wire	kg	3.00					
	Plastering Including COMFORT ROOM)	sq.m	247.90					
2.0200	Portland Cement	bag	82.00					
2.0500	Washed Sand	cu.m	9.00					
	Sub-total							
6.0000	Doors and Windows							
6.0100	Removal of Door with Jamb	set	6.00					
6.0200	Removal of Window with Jamb	sq.m	35.52					
	aluminum door (2.1m x 7m) with complete accessories	set	3.00					
6.0320	D-1, Steel Door 0.90m x 2.10m on 150mm Steel Jamb complete with Accessories	set	6.00					
	W - 1, (2.4 x 1.6 m) Jalousie Window with Clear Glass Blades on JalousPlus Type Silver Colored Frame and Fixed Clear Glass Transom on 50 x 150 mm Steel Jamb complete with Accessories	set	3.00					
6.1040								
	W - 2, (1.3 x 1.6 m) Jalousie Window with Clear Glass Blades on JalousPlus Type Silver Colored Frame and Fixed Clear Glass Transom on 50 x 150 mm Steel Jamb complete with Accessories	set	9.00					
6.1050								
6.0910	W - 4, (0.6 x 0.6 m) Steel Jamb Awning Window with Clear Glass	set	3.00					
	Sub-total							
8.0000	Roofing Works including CR							
8.0100	Removal of Roofing Sheets	sq.m	267.50					
8.0200	Removal of Ridge Roll	pc	13.00					
8.0300	Removal of Flashing	pc	10.00					
	G.I. Long-Span Roofing, Corrugated, Pre-Painted, 1220mm x 0.5mm BMT	ln	267.50					
	G.I. Flashing, Preformed, Pre-Painted, 0.610m x 2.440m x 0.5mm BMT	pc	10.00					
	G.I. Ridge Roll, Preformed, Pre-Painted, 0.610m x 2.440m x 0.5mm BMT	pc	13.00					
7.1040	L 20 x 20 x 2mm	kg	144.00					
7.1020	L 38 x 38 x 4.5mm	kg	91.50					
8.0900	J-Bolt (6mm dia.)	pc	1,908.00					
	Teckscrew 2-1/2"	pc	2,526.00					
8.1300	Roof Sealant	L	5.00					
8.1100	Blind Rivets	pc	480.00					
	Sub-total							
9.0000	Carpentry Works							
	Interior ceiling(including CR)	sq.m	234.98					
9.1700	Rough Lumber, Sun Dried, Tangala	bd ft	1,023.00					
9.0500	Plywood, Marine 1/4" x 4' x 8'	pc	81.00					
9.2100	Finishing Nails	kg	5.00					
9.1900	Wood Preservative, Brown ceiling manhole	L	2.00					
	ceiling manhole	pc	3.00					

ITEM NO.	DESCRIPTION	UNIT	QTY	UNIT COST		TOTAL COST		GRAND TOTAL
				MATERIAL	LABOR	MATERIAL	LABOR	
	Exterior Ceiling	sq.m	42.82					
9.1700	Rough Lumber, Sun Dried, Tangile	bd ft	275.00					
9.0500	Plywood, Marine 1/4" x 4' x 8'	pc	22.00					
9.2100	Finishing Nails	kg	2.00					
9.1000	Wood Preservative, Brown	L	5.00					
9.1400	Fascia Board, Fiber Cement 12" x 8"	pc	27.00					
9.1450	25mm x 25mm x 300mm Wood slats @25mm clear spacing ceiling ventilation (provide stainless steel wire mesh inside)	pc	12.00					
	Stackboards	sq.m	17.28					
9.1800	S4S Lumber, Kiln Dried, Tangile	bd ft	110.00					
9.2000	Lasant, 1/4" thk	pc	6.00					
9.2200	Concrete Nails	kg	1.00					
9.2100	Finishing Nails	kg	1.00					
	Sub-total							
10.0000	Electrical Works							
	Roughing Ins							
10.0100	Electrical Conduit (PVC, 15mmØ)	pc	72.00					
10.0400	RSC 20mmØ	pc	1.00					
10.0600	Entrance Cap 20mm dia.	pc	1.00					
10.1200	Junction Box, 4" x 4" G.I.	pc	18.00					
10.1300	Utility Box, 2" x 4" G.I.	pc	12.00					
	Wires & Fittings							
10.1600	3.5 mm ² THHN Wire, Stranded	m	648.00					
10.1700	5.5 mm ² THHN Wire, Stranded	m	10.00					
10.2700	Duplex Convenience Outlet, Grounding Type, 20A, 250V	set	12.00					
10.3200	3 Single Pole Wall Switches in One Switch Plate (10 AMP, 230V)	set	3.00					
10.2900	Single Pole Wall Switch in One Switch Plate (10 AMP, 230V)	set	3.00					
10.3610	F1, 1 x 40W Industrial Type	set	15.00					
10.4100	Circuit Breaker, 20A 2P	set	3.00					
10.3800	Panel Box, Flush Type, 8 Branches	set	1.00					
10.5400	Wall Fan, 60W, 230V, 60Hz	set	12.00					
10.6500	Electrical Tape	pc	6.00					
	Fire Extinguisher(10#)	set	3.00					
	Sub-total							
13.0000	Painting Works							
	Concrete surfaces	sq.m	464.14					
13.0100	Neutralizer	gal	7.00					
13.0200	Latex, Flat	gal	20.00					
13.0300	Masonry Putty	gal	20.00					
13.0400	Latex, Semi Gloss	gal	5.00					
13.0500	Anti Cor	qrt	2.00					
	Wood surfaces	sq.m	252.48					
13.0600	Enamel, Flatwall	gal	13.00					
13.0700	Glazing Putty	gal	13.00					
13.0800	Enamel, Semi Gloss	gal	13.00					
13.0900	Paint Thinner	L	7.00					
	Steel Surfaces							
13.1200	Primer, Epoxy	gal	10.00					
	Sub-total							
14.0000	Tile Works(including wall of cr)							
	Flooring	sq.m	176.40					
	removal of old tiles (comfort room)	lot	1.00					
	Unglazed Floor Tiles 40cm x 40cm	pc	1,100.00					
14.0110	Tiles 20cmx 20cm	pc	675.00					
14.0300	Tile Adhesive 25 kg/bag	bag	30.00					
14.0500	Tile Grout 5 kg/bag	bag	14.00					
2.0200	Portland Cement	bag	30.00					
2.0500	Washed Sand	cu.m	5.00					
	Sub-total							
BLDG#2 (6M X 7.5M) - 4CL (Converted to 3CL - 7m x 6m)								
1.0000	Earthworks							
	Select M	cu.m	13.50					
2.0000	Concreting Works							
	Slab (Concrete Topping)	cu.m	21.80					
2.0200	Portland Cement	bag	197.00					
2.0300	Crushed Gravel 3/4"	cu.m	22.00					
2.0500	Washed Sand	cu.m	11.00					
2.0000	Concreting Works							
	Column	cu.m	4.88					
2.0200	Portland Cement	bag	44.00					
2.0300	Crushed Gravel 3/4"	cu.m	5.00					
2.0500	Washed Sand	cu.m	2.50					
	Roof Beams	cu.m	7.70					

ITEM NO.	DESCRIPTION	UNIT	QTY	UNIT COST		TOTAL COST		GRAND TOTAL
				MATERIAL	LABOR	MATERIAL	LABOR	
2.0200	Portland Cement	bag	70.00					
2.0300	Crushed Gravel 3/4"	cu.m	7.75					
2.0500	Washed Sand	cu.m	4.00					
	Sub-total							
3.0000	Rebar Works							
	Column	kg	1,398.10					
	Roof Beams	kg	1,388.50					
	Slab	kg	609.00					
3.0500	Deformed Round Bars, Grade 40	kg	2,786.60					
3.1200	G.I. Tie Wire	kg	22.00					
	Sub-total							
4.0000	Formworks							
	Column	sq.m	98.10					
4.0100	Coos Lumber	bd.ft	500.40					
4.0200	Plywood Ordinary, 1/4" x 4' x 8'	pc	17.00					
4.0400	CWN, Assorted	kg	8.00					
	Roof Beams	sq.m	101.30					
4.0100	Coos Lumber	bd.ft	516.90					
4.0200	Plywood Ordinary, 1/4" x 4' x 8'	pc	18.00					
4.0400	CWN, Assorted	kg	8.00					
	Sub-total							
5.0000	Masonry Works							
	Masonry Wall including Comfort room & Partition Wall	sq.m	265.40					
5.0300	CHB 4" Bk	pc	3,318.00					
2.0200	Portland Cement	bag	133.00					
2.0500	Washed Sand	cu.m	12.00					
5.0400	10mm x 6m RSB	kg	352.00					
3.1200	G.I. Tie Wire	kg	8.00					
	Plastering	sq.m	530.80					
2.0200	Portland Cement	bag	176.00					
2.0500	Washed Sand	cu.m	18.00					
	Sub-total							
6.0000	Doors and Windows							
6.0100	Removal of Door with Jamb	set	4.00					
6.0200	Removal of Window with Jamb	sq.m	35.68					
6.0320	D-1, Steel Door 0.90m x 2.10m on 150mm SSteel Jamb complete with Accessories (lever type door knob)	set	6.00					
	aluminum door (2.1m x .7m) with complete accessories	set	3.00					
6.1040	W - 1, (2.4 x 1.6 m) Jalousie Window with Clear Glass Blades on JalousPlus Type Silver Colored Frame and Fixed Clear Glass Transom on 50 x 150 mm Steel Jamb complete with Accessories	set	3.00					
6.1050	W - 2, (1.3 x 1.6 m) Jalousie Window with Clear Glass Blades on JalousPlus Type Silver Colored Frame and Fixed Clear Glass Transom on 50 x 150 mm Steel Jamb complete with Accessories	set	9.00					
6.0910	W - 4, (0.6 x 0.6 m) Steel Jamb Awning Window with Clear Glass	set	3.00					
	Sub-total							
7.0000	Steel Works							
	Trusses and Members							
9.0070	Removal of Truss/ Beams	bd.ft	1,578.50					
9.0080	Removal of Purlins	bd.ft	993.00					
7.0900	L 50 x 50 x 6mm	kg	1,995.00					
7.0200	2" x 4" x 1.5mm C - purlins	kg	1,702.50					
7.1010	L 50 x 50 x 2mm	kg	33.00					
7.1810	Machine Bolts (10 mm dia.)	pc	780.00					
7.2200	15mmØ Sag Rods with Standard Nuts and Washers	pc	288.00					
7.1900	Plain Round Bar 16mmØ x 6m	pc	27.00					
7.2000	Turn Buckle 16 mmØ	pc	24.00					
7.1510	Anchor Bolt with Nuts and Washer, 15mmØ x 50mm x 300mm	pc	60.00					
7.1200	Steel Plate 1.20m x 2.40m x 10mm thk	pc	3.75					
7.1300	Steel Plate 1.20m x 2.40m x 12mm thk	pc	0.75					
7.3600	Welding Rod	kg	27.50					

ITEM NO.	DESCRIPTION	UNIT	QTY	UNIT COST		TOTAL COST		GRAND TOTAL
				MATERIAL	LABOR	MATERIAL	LABOR	
8.1100	Primer, Zinc Chromate	gal	10.00					
	Sub-total							
8.0000	Roofing Works							
8.0100	Removal of Roofing Sheets	sq m	332.80					
8.0200	Removal of Ridge Roll	pc	13.00					
8.0300	Removal of Flashing	pc	10.00					
8.0600	G.I. Long-Span Roofing, Corrugated, Pre-Painted, 1220mm x 0.5mm BMT	lm	332.80					
8.0700	G.I. Ridge Roll, Preformed, Pre-Painted, 0.610m x 2.440m x 0.5mm BMT	pc	13.00					
8.0800	G.I. Flashing, Preformed, Pre-Painted, 0.610m x 2.440m x 0.4mm BMT	pc	10.00					
7.1040	L 20 x 20 x 2mm	kg	80.00					
7.1020	L 38 x 38 x 4.5mm	kg	80.00					
	Teckscrew 2-1/2"	pc	842.00					
8.0900	J-Rol (6mm dia.)	pc	1,008.00					
8.1300	Roof Sealant	L	4.00					
8.1100	Blind Rivets	pc	180.00					
	Sub-total							
9.0000	Carpentry Works							
	Interior ceiling (including comfort rooms)	sq.m	262.75					
9.1700	Rough Lumber, Sun Dried, Tangle	bd.ft	887.00					
9.0500	Plywood, Marine 1/4" x 4' x 8'	pc	70.00					
9.2100	Finishing Nails	kg	4.00					
9.1900	Wood Preservative, Brown	L	2.00					
	ceiling manhole	set	1.00					
	Exterior Ceiling	sq.m	78.52					
9.1700	Rough Lumber, Sun Dried, Tangle	bd.ft	344.00					
9.0500	Plywood, Marine 1/4" x 4' x 8'	pc	27.00					
9.2100	Finishing Nails	kg	2.00					
9.1900	Wood Preservative, Brown	L	7.00					
9.1430	Fascia Board, Fiber Cement 12" x 8'	pc	32.00					
9.1400	25mm x 25mm x 300mm Wood slats @25mm clear spacing ceiling ventilation (provide stainless steel wire mesh inside)	pc	12.00					
	Blackboards	sq.m	17.28					
9.1800	S4S Lumber, Kiln Dried, Tangle	bd.ft	110.00					
9.2000	Lasant, 1/4" dia	pc	6.00					
9.2200	Concrete Nails	kg	1.00					
9.2100	Finishing Nails	kg	1.00					
	Sub-total							
10.0000	Electrical Works							
	Roughing-ins							
10.0100	Electrical Conduit uPVC, 15mmØ	pc	96.00					
10.0400	RSC 20mmØ	pc	1.00					
10.0800	Entrance Cap 20mm dia.	pc	1.00					
10.1200	Junction Box, 4" x 4" G.I.	pc	24.00					
10.1300	Utility Box, 2" x 4" G.I.	pc	16.00					
	Wires & Fittings							
10.1600	3.5 mm ² THHN Wire, Stranded	m	750.00					
10.1700	5.5 mm ² THHN Wire, Stranded	m	10.00					
10.2700	Duplex Convenience Outlet, Grounding Type, 20A, 250V	set	12.00					
10.2200	3 Single Pole Wall Switches in One Switch Plate (10 AMP, 230V)	set	3.00					
10.2900	Single Pole Wall Switch in One Switch Plate (10 AMP, 230V)	set	3.00					
10.3610	FL 1 x 40W Industrial Type	set	15.00					
10.3600	Panel Box, Flush Type, 12 Branches	set	1.00					
10.4100	Circuit Breaker, 20A 2P	set	4.00					
10.5500	Electrical Tape	pc	8.00					
10.5400	Wall Fan, 60W, 230V, 60Hz	set	12.00					
	Fire Extinguisher (10lb)	set	3.00					
	Sub-total							
11.0000	Plumbing Works							
11.0200	Water Closet 1.6gpf with Accessories	set	3.00					

ITEM NO.	DESCRIPTION	UNIT	QTY	UNIT COST		TOTAL COST		GRAND TOTAL
				MATERIAL	LABOR	MATERIAL	LABOR	
	urinal	set	3.00					
11.0100	Water Closet Flange	set	3.00					
11.4410	S.S. Floor Drain 4" x 4"	set	3.00					
11.0410	Faucet, Lavatory	set	3.00					
11.1000	PP-R Pipe 3/4"Ø x 4.0m	pc	12.00					
11.1100	PP-R Pipe 1/2"Ø x 4.0m	pc	4.00					
11.2700	PP-R Tee, 1/2"Ø	pc	21.00					
11.2100	PP-R Elbow 90° x 3/4"Ø	pc	2.00					
11.2200	PP-R Elbow 90° x 1/2"Ø	pc	8.00					
11.2910	PP-R Tee Reducer, 3/4" x 1/2"Ø	pc	3.00					
11.0500	Faucet, Hose Bibb, Brass 1/2"Ø	pc	20.00					
11.3800	Gate Valve, 3/4"Ø	pc	5.00					
11.4200	Teflon Tape	roll	13.00					
11.4400	S.S. Grab Rail 1-1/2"Ø	set	3.00					
	Sub-total							
12.0000	Sanitary Works							
12.0110	Three Chamber Septic Vault	unit	2.00					
12.0400	PVC Sanitary Pipe 6"Ø x 3.0m	pc	9.00					
12.0500	PVC Sanitary Pipe 4"Ø x 3.0m	pc	41.00					
12.0700	PVC Sanitary Pipe 2"Ø x 3.0m	pc	13.00					
12.0900	PVC Sanitary Elbow 90° x 4"Ø	pc	18.00					
12.1100	PVC Sanitary Elbow 90° x 2"Ø	pc	24.00					
12.1300	PVC Sanitary Elbow 1/8 x 4"Ø	pc	4.00					
12.1410	PVC Sanitary Elbow 1/8 x 2"Ø	pc	4.00					
12.2110	PVC Sanitary Tee 4" x 4"	pc	9.00					
12.2200	PVC Sanitary Tee 2" x 2"	pc	13.00					
12.1500	PVC Sanitary Wye 6" x 6"	pc	10.00					
12.1800	PVC Sanitary Wye 2" x 2"	pc	8.00					
12.2600	PVC P-Trap 4"	pc	6.00					
12.2700	PVC P-Trap 2"	pc	8.00					
12.2400	Brass Cleanout 4" x 4"	pc	5.00					
12.2500	Brass Cleanout 2" x 2"	pc	4.00					
12.3000	PVC Cement	can	12.00					
	Sub-total							
13.0000	Painting Works							
	Concrete surfaces	sq m	527.89					
13.0100	Neutralizer	gal	7.00					
13.0200	Latex, Flat	gal	22.00					
13.0300	Masonry Putty	gal	22.00					
13.0400	Latex, Semi Gloss	gal	22.00					
13.0500	Acri Color	qt	5.00					
	Wood surfaces	sq m	384.08					
13.0600	Enamel, Flat/roll	gal	20.00					
13.0700	Glazing Putty	gal	20.00					
13.0800	Enamel, Semi Gloss	gal	20.00					
13.0900	Paint Thinner	L	10.00					
	Sub-total							
14.0000	Tile Works							
	Flooring (Classrooms & comfort Rooms)	sq m	189.00					
14.0220	Unglazed Floor Tiles 40cm x 40cm	pc	1,182.00					
14.0110	Glazed Wall Tiles 20cm x 20cm	pc	743.00					
14.0300	Tile Adhesive 25 kg/bag	bag	35.00					
14.0500	Tile Grout 5 kg/bag	bag	15.00					
2.0200	Portland Cement	bag	71.00					
2.0500	Washed Sand	cu m	5.00					
	Sub-total							
BLDG#4	(7MX9M)-1CL							
	Concreting							
	Slab (Concrete Topping infront of the classrooms)	cu m	1.81					
2.0200	Portland Cement	bag	14.00					
2.0300	Crushed Gravel 3/4"	cu m	1.75					
2.0500	Washed Sand	cu m	1.00					

ITEM NO.	DESCRIPTION	UNIT	QTY	UNIT COST		TOTAL COST		GRAND TOTAL
				MATERIAL	LABOR	MATERIAL	LABOR	
	Sub-total							
8.0000	Doors and Windows							
8.0100	Removal of Door with Jamb	set	1.00					
8.0200	D-1, Steel Door 0.90m x 2.10m on 150mm 5Steel Jamb complete with Accessories	set	2.00					
	Relatish Windows	lot	1.00					
	Sub-total							
8.0000	Roofing Works							
8.0100	Removal of Roofing Sheets	sq m	114.40					
8.0200	Removal of Ridge Roll	pc	9.00					
8.0300	Removal of Flashing	pc	10.00					
	G.I. Long-Span Roofing, Corrugated, Pre-Painted, 1220mm x 0.5mm BMT	ms	114.40					
	G.I. Flashing, Preformed, Pre-Painted, 0.610m x 2.440m x 0.5mm BMT	pc	10.00					
	G.I. Ridge Roll, Preformed, Pre-Painted, 0.610m x 2.440m x 0.5mm BMT	pc	9.00					
7.1040	L 20 x 20 x 2mm	kg	89.00					
7.1020	L 38 x 38 x 4.5mm	kg	66.00					
	Tackscrew 2-1/2"	pc	842.00					
8.0900	J-Bolt (8mm dia.)	pc	1,272.00					
8.1300	Roof Sealant	l	4.00					
8.1100	Blind Rivets	pc	160.00					
	Sub-total							
9.0000	Carpentry Works							
	Interior ceiling	sq m	70.88					
9.1700	Rough Lumber, Sun Dried, Tangule	bd ft	300.00					
9.0500	Plywood, Marine 1/4" x 4' x 8'	pc	24.00					
9.2100	Finishing Nails	kg	2.00					
9.1800	Wood Preservative, Brown	l	6.00					
	ceiling manhole	pc	1.00					
	Exterior Ceiling	sq m	31.72					
9.1700	Rough Lumber, Sun Dried, Tangule	bd ft	130.00					
9.0500	Plywood, Marine 1/4" x 4' x 8'	pc	11.00					
9.2100	Finishing Nails	kg	1.00					
9.1900	Wood Preservative, Brown	l	3.00					
9.1430	Fascia Board, Fiber Cement 12" x 8'	pc	17.00					
9.1430	25mm x 25mm x 300mm Wood slats @25mm clear spacing ceiling ventilation (provide stainless steel wire mesh inside)	pc	6.00					
	Blackboards	sq m	5.76					
9.1800	S4S Lumber, Kiln Dried, Tangule	bd ft	37.00					
9.2000	Lawnit, 1/4" thk	pc	2.00					
9.2200	Concrete Nails	kg	1.00					
9.2100	Finishing Nails	kg	1.00					
	Sub-total							
10.0000	Electrical Works							
	Roughing-ins							
10.0100	Electrical Conduit uPVC, 15mmØ	pc	20.00					
10.0490	RSC 25mmØ	pc	1.00					
10.0600	Entrance Cap 20mm dia.	pc	1.00					
10.1200	Junction Box, 4" x 4" G.I.	pc	9.00					
10.1300	Utility Box, 2" x 4" G.I.	pc	4.00					
	Wires & Fixtures							
10.1600	3.5 mm² T194N Wire, Stranded	m	180.00					
10.2700	Duplex Convenience Outlet, Grounding Type, 20A, 250V	set	4.00					
10.3200	3 Single Pole Wall Switches in One Switch Plate (10 AMP, 230V)	set	1.00					
10.3600	Single Convenience Outlet, Grounding Type, 15 AMP, 230V (EF)	set	1.00					
10.3610	FL 1 x 40W Industrial Type	set	5.00					
10.4300	Circuit Breaker, 40A 2P	set	1.00					
10.5400	Wall Fan, 60W, 230V, 60Hz	set	4.00					
10.5500	Electrical Tape	pc	2.00					
	Fire Extinguisher(10B)	set	1.00					

ITEM NO.	DESCRIPTION	UNIT	QTY	UNIT COST		TOTAL COST		GRAND TOTAL
				MATERIAL	LABOR	MATERIAL	LABOR	
	Sub-total							
13.0000	Painting Works							
	Concrete surfaces	sq m	196.56					
13.0100	Neutralizer	gal	3.00					
13.0200	Latex, Flat	gal	8.00					
13.0300	Masonry Putty	gal	8.00					
13.0400	Latex, Semi Gloss	gal	2.00					
13.0500	Acrl Color	qt	1.00					
	Wood surfaces	sq m	84.14					
13.0600	Enamel, Flatwat	gal	2.00					
13.0700	Glazing Putty	gal	4.00					
13.0800	Enamel, Semi Gloss	gal	4.00					
13.0900	Paint Thinner	L	1.00					
	Steel Surfaces							
13.1200	Primer, Epoxy	gal	3.00					
	Sub-total							
BLDG#5	(6MX8M)- 2CL							
6.0000	Doors and Windows							
6.0100	Removal of Door with Jamb	set	1.00					
6.0320	D-1, Steel Door 0.90m x 2.10m on 150mm S Steel Jamb complete with Accessories	set	3.00					
	Refurbish Windows	lot	1.00					
	Sub-total							
8.0000	Roofing Works							
8.0100	Removal of Roofing Sheets	sq m	205.60					
8.0200	Removal of Ridge Roll	pc	8.00					
8.0300	Removal of Flashing	pc	10.00					
	G.I. Long-Span Roofing, Corrugated, Pre-Painted, 1220mm x 0.5mm BMT	lm	205.60					
	G.I. Flashing, Preformed, Pre-Painted, 0.610m x 2.440m x 0.5mm BMT	pc	10.00					
	G.I. Ridge Roll, Preformed, Pre-Painted, 0.610m x 2.440m x 0.5mm BMT	pc	8.00					
7.1040	L 20 x 20 x 2mm	kg	66.00					
7.1020	L 38 x 38 x 4.5mm	kg	66.00					
	Tackscrew 2-1/2"	pc	1,372.00					
8.0900	J-Bolt (6mm dia.)	pc	1,272.00					
8.1300	Roof Sealant	L	4.00					
8.1100	Blind Rivets	pc	180.00					
	Sub-total							
9.0000	Carpentry Works							
	Interior ceiling	sq m	129.06					
9.1700	Rough Lumber, Sun Dried, Tangule	bd ft	525.00					
9.0500	Plywood, Marine 1/4" x 4' x 8'	pc	42.00					
9.2100	Finishing Nails	kg	3.00					
9.1900	Wood Preservative, Brown	L	10.00					
	ceiling manhole	pc	2.00					
	Exterior Ceiling	sq m	49.92					
9.1700	Rough Lumber, Sun Dried, Tangule	bd ft	219.00					
9.0500	Plywood, Marine 1/4" x 4' x 8'	pc	18.00					
9.2100	Finishing Nails	kg	1.00					
9.1900	Wood Preservative, Brown	L	4.00					
9.1430	Fascia Board, Fiber Cement 12" x 8"	pc	17.00					
9.1400	25mm x 25mm x 300mm Wood slats @25mm clear spacing ceiling ventilation (provide stainless steel wire mesh inside)	pc	6.00					
	Blackboards	sq m	11.52					
9.1800	545 Lumber, Kin Dried, Tangule	bd ft	74.00					
9.2000	Lawsnt, 1/4" thk	pc	4.00					
9.2200	Concrete Nails	kg	1.00					
9.2100	Finishing Nails	kg	1.00					
	Sub-total							
10.0000	Electrical Works							
	Roughing-ins							
10.0100	Electrical Conduit uPVC, 15mmØ	pc	20.00					
10.0490	RSC 20mmØ	pc	1.00					
10.0600	Entrance Cap 20mm dia.	pc	1.00					
10.1200	Junction Box, 4" x 4" G.I.	pc	6.00					
10.1300	Utility Box, 2" x 4" G.I.	pc	4.00					
	Wires & Fixtures							
10.1600	3.5 mm² THHN Wire, Stranded	m	180.00					
10.2700	Duplex Convenience Outlet, Grounding Type, 20A, 250V	set	8.00					
10.3200	3 Single Pole Wall Switches in One Switch Plate (10 AMP, 230V)	set	1.00					
10.3000	Single Convenience Outlet, Grounding Type, 15 AMP, 230V (EF)	set	1.00					
10.3610	FL 1 x 40W Industrial Type	set	5.00					
10.4300	Circuit Breaker, 40A 2P	set	1.00					
10.5400	Wall Fan, 60W, 230V, 60Hz	set	8.00					
10.5500	Electrical Tape	pc	2.00					

ITEM NO.	DESCRIPTION	UNIT	QTY	UNIT COST		TOTAL COST		GRAND TOTAL
				MATERIAL	LABOR	MATERIAL	LABOR	
	Fire Extinguisher(10lb)	set	2.00					
	Sub-total							
13.0000	Painting Works							
	Concrete surfaces	sq m	196.56					
13.0100	Neutralizer	gal	3.00					
13.0200	Latex, Flat	gal	8.00					
13.0300	Masonry Putty	gal	8.00					
13.0400	Latex, Semi Gloss	gal	2.00					
13.0500	Anti Color	gal	1.00					
	Wood surfaces	sq m	181.44					
13.0600	Enamel, Flatwall	gal	3.00					
13.0700	Glazing Putty	gal	8.00					
13.0800	Enamel, Semi Gloss	gal	8.00					
13.0900	Paint Thinner	L	2.00					
	Steel Surfaces							
13.1200	Primer, Epoxy	gal	6.00					
	Sub-total							
14.0000	Tile Works							
	Flooring	sq m	100.80					
	Unglazed Floor Tiles 40cm x 40cm	pc	630.00					
14.0300	Tile Adhesive 25 kg/bag	bag	19.00					
14.0500	Tile Grout 5 kg/bag	bag	8.00					
2.0200	Portland Cement	bag	31.00					
2.0500	Washed Sand	cu m	3.00					
	Sub-total							
BLDG#6	(7MX7M) - 2CL							
5.0000	Masonry Works							
	Masonry Wall including Comfort rooms	sq m	39.48					
5.0400	Cr-B 4" thk	pc	494.00					
5.0200	Portland Cement	bag	13.00					
5.0300	Washed Sand	cu m	2.00					
5.0600	10mm x 6m RSB	kg	53.00					
5.0700	G.I. Tie Wire	kg	2.00					
	Plastering	sq m	188.96					
5.0200	Portland Cement	bag	62.00					
5.0300	Washed Sand	cu m	7.00					
	Sub-total							
6.0000	Doors and Windows							
6.0100	Removal of Door with Jamb	set	1.00					
6.0200	Removal of Window with Jamb	sq m	9.50					
	D-1, Steel Door 0.90m x 2.10m on 150mm Steel Jamb complete with Accessories	set	4.00					
	aluminum door (2.1m x 7m) with complete accessories	set	3.00					
	W - 1, (2.4 x 1.6 m) Jalousie Window with Clear Glass Blades on JalousPlus Type Silver Colored Frame and Fixed Clear Glass Transom on 50 x 150 mm Steel Jamb complete with Accessories	set	4.00					
	W - 2, (1.3 x 1.6 m) Jalousie Window with Clear Glass Blades on JalousPlus Type Silver Colored Frame and Fixed Clear Glass Transom on 50 x 150 mm Steel Jamb complete with Accessories	set	4.00					
	W - 4, (0.6 x 0.6 m) Steel Jamb Awning Window with Clear Glass	set	2.00					
	Sub-total							
8.0000	Roofing Works							
8.0100	Removal of Roofing Sheets	sq m	176.80					
8.0200	Removal of Ridge Roll	pc	7.00					
8.0300	Removal of Flashing	pc	10.00					
	G.I. Long-Span Roofing, Corrugated, Pre- Painted, 1220mm x 0.5mm BMT	ln	176.80					
	G.I. Flashing, Preformed, Pre-Painted, 0.610m x 2.440m x 0.5mm BMT	pc	10.00					
	G.I. Ridge Roll, Preformed, Pre-Painted, 0.610m x 2.440m x 0.5mm BMT	pc	7.00					
7.1040	L 20 x 20 x 2mm	kg	98.00					
7.1020	L 38 x 38 x 4.5mm	kg	66.00					
	Texascrew 2-5"	pc	1,372.00					
8.0900	J-Bolt (6mm dia.)	pc	1,272.00					
8.1300	Roof Sealant	L	4.00					
8.1100	Bind Rivets	pc	160.00					
	Sub-total							
9.0000	Carpentry Works							
	Exterior Ceiling	sq m	44.72					
9.1700	Rough Lumber, Sun Dried, Tangule	bd ft	196.00					
9.0500	Plywood, Marine 1/4" x 4' x 8'	pc	16.00					
9.2100	Finishing Nails	kg	1.00					
9.1900	Wood Preservative, Brown	L	4.00					
9.1430	Fascia Board, Fiber Cement 12" x 6"	pc	17.00					
	25mm x 25mm x 300mm Wood slats @25mm clear spacing ceiling ventilation (provide stainless steel wire mesh inside)	pc	8.00					

ITEM NO.	DESCRIPTION	UNIT	QTY	UNIT COST		TOTAL COST		GRAND TOTAL
				MATERIAL	LABOR	MATERIAL	LABOR	
	Blackboards	sq.m	11.82					
9.1800	S4S Lumber, Kiln Dried, Tangile	bd.ft	74.00					
9.2000	Laminat, 1/4" thk	pc	4.00					
9.2200	Concrete Nails	kg	1.00					
9.2100	Finishing Nails	kg	1.00					
	Sub-total							
10.0000	Electrical Works							
	Roughing-ins							
10.0100	Electrical Conduit uPVC, 15mmØ	pc	20.00					
10.0400	RSC 20mmØ	pc	1.00					
10.0800	Entrance Cap 20mm dia	pc	1.00					
10.1200	Junction Box, 4" x 4" G.I.	pc	8.00					
10.1300	Utility Box, 2" x 4" G.I.	pc	4.00					
	Wires & Fittings							
10.1800	3.5 mm ² THHN Wire, Stranded	m	180.00					
10.2700	Duplex Convenience Outlet, Grounding Type, 20A, 250V	set	4.00					
10.3200	3 Single Pole Wall Switches in One Switch Plate (10 AMP, 230V)	set	1.00					
10.3000	Single Convenience Outlet, Grounding Type, 15 AMP, 230V (EF)	set	1.00					
10.3010	FL 1 x 40W Industrial Type	set	10.00					
10.4300	Circuit Breaker, 40A 2P	set	1.00					
10.5400	Wall Fan, 60W, 230V, 60Hz	set	8.00					
10.5500	Electrical Tape	pc	2.00					
	Fire Extinguisher(10b)	set	2.00					
	Sub-total							
13.0000	Painting Works							
	Concrete surfaces	sq.m	286.10					
13.0100	Neutralizer	gal	4.00					
13.0200	Latex, Flat	gal	12.00					
13.0300	Masonry Putty	gal	12.00					
13.0400	Latex, Semi Gloss	gal	3.00					
13.0500	Acn Color	qt	1.00					
	Wood surfaces	sq.m	56.24					
13.0600	Enamel, Flatwall	gal	1.00					
13.0700	Glazing Putty	gal	3.00					
13.0800	Enamel, Semi Gloss	gal	3.00					
13.0900	Paint Thinner	L	1.00					
	Steel Surfaces							
13.1200	Primer, Epoxy	gal	4.00					
	Sub-total							
14.0000	Tile Works							
	Flooring	sq.m	102.90					
	Removal of CR	lot	1.00					
	Ungrazed Floor Tiles 40cm x 40cm	pc	644.00					
14.0110	Glazed Wall Tiles 20cm x 20cm	pc	450.00					
14.0110	Glazed floor Tiles 20cm x 20cm	pc	200.00					
14.0300	Tile Adhesive 25 kg/bag	bag	15.00					
14.0500	Tile Grout 5 kg/bag	bag	8.00					
2.0200	Portland Cement	bag	31.00					
2.0500	Washed Sand	cu.m	3.00					
	Sub-total							
I	DIRECT COST							
II	INDIRECT COST							
III	TAX							
IV	TOTAL CONSTRUCTION COST (I + II + III)							

Prepared by:

contractor/bidder

Section IX. Checklist of Technical and Financial Documents

Notes on the Checklist of Technical and Financial Documents

The prescribed documents in the checklist are mandatory to be submitted in the Bid, but shall be subject to the following:

- a. GPPB Resolution No. 09-2020 on the efficient procurement measures during a State of Calamity or other similar issuances that shall allow the use of alternate documents in lieu of the mandated requirements; or
- b. any subsequent GPPB issuances adjusting the documentary requirements after the effectivity of the adoption of the PBDs.

The BAC shall be checking the submitted documents of each Bidder against this checklist to ascertain if they are all present, using a non-discretionary “pass/fail” criterion pursuant to Section 30 of the 2016 revised IRR of RA No. 9184.

Checklist of Technical and Financial Documents

I. TECHNICAL COMPONENT ENVELOPE

Class "A" Documents

Legal Documents

- (a) Valid PhilGEPS Registration Certificate (Platinum Membership) (all pages) in accordance with Section 8.5.2 of the IRR;

Technical Documents

- (b) Statement of the prospective bidder of all its ongoing government and private contracts, including contracts awarded but not yet started, if any, whether similar or not similar in nature and complexity to the contract to be bid; **and**
- (c) Statement of the bidder's Single Largest Completed Contract (SLCC) similar to the contract to be bid, except under conditions provided under the rules; **and**
- (d) Special PCAB License in case of Joint Ventures **and** registration for the type and cost of the contract to be bid; **and**
- (e) Original copy of Bid Security. If in the form of a Surety Bond, submit also a certification issued by the Insurance Commission **or** original copy of Notarized Bid Securing Declaration; **and**
- (f) Project Requirements, which shall include the following:
 - a. Organizational chart for the contract to be bid;
 - b. List of contractor's key personnel (*e.g.*, Project Manager, Project Engineers, Materials Engineers, and Foremen), to be assigned to the contract to be bid, with their complete qualification and experience data;
 - c. List of contractor's major equipment units, which are owned, leased, and/or under purchase agreements, supported by proof of ownership or certification of availability of equipment from the equipment lessor/vendor for the duration of the project, as the case may be; **and**
- (g) Original duly signed Omnibus Sworn Statement (OSS) **and** if applicable, Original Notarized Secretary's Certificate in case of a corporation, partnership, or cooperative; or Original Special Power of Attorney of all members of the joint venture giving full power and authority to its officer to sign the OSS and do acts to represent the Bidder.

Financial Documents

- (h) The prospective bidder's computation of Net Financial Contracting Capacity (NFCC).

Class "B" Documents

- (i) If applicable, duly signed joint venture agreement (JVA) in accordance with RA No. 4566 and its IRR in case the joint venture is already in existence **or** duly notarized statements from all the potential joint venture partners stating that they will enter into and abide by the provisions of the JVA in the instance that the bid is successful.

II. FINANCIAL COMPONENT ENVELOPE

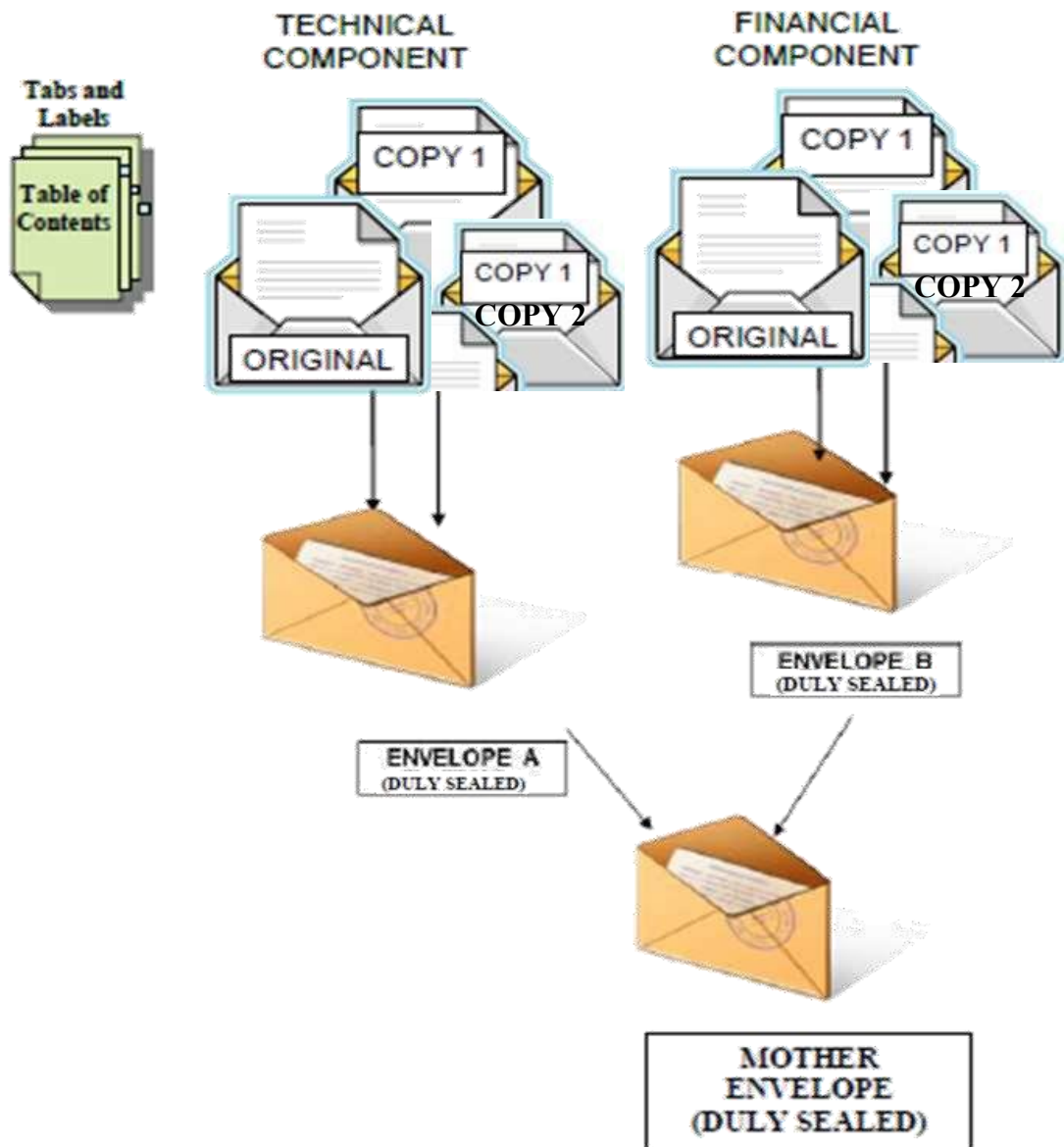
- (j) Original of duly signed and accomplished Financial Bid Form; **and**

Other documentary requirements under RA No. 9184

- (k) Original of duly signed Bid Prices in the Bill of Quantities; **and**
- (l) Duly accomplished Detailed Estimates Form, including a summary sheet indicating the unit prices of construction materials, labor rates, and equipment rentals used in coming up with the Bid; **and**
- (m) Cash Flow by Quarter.

ENVELOPE SEALING ILLUSTRATION

(Two-Envelope System)



BIDDER'S COMPANY NAME:

OFFICE ADDRESS:

PUBLIC BIDDING: (PROJECT TITLE)

BIDDING FOR (No.) : (Item Description) [If Applicable]

THE CHAIRPERSON

BIDS AND AWARDS COMMITTEE

DEPARTMENT OF EDUCATION

SCHOOLS DIVISION OFFICE OF ALAMINOS

San Jose Drive, Poblacion, Alaminos City, Pangasinan